

LEA Name : Northern Lehigh SD
Address : 1201 Shadow Oaks Ln
Slatington , PA 18080

County : Lehigh
AUN Number : 121394503
LEA Type : SD


Annual Financial Report Accuracy Certification Statement

For Fiscal Year Ending
6/30/2022

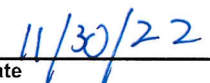
Pennsylvania Department of Education
&
Office of Comptroller Operations

PDE-2056: Intermediate Unit
PDE-2057: School District, AVTS/CTC, Charter School,
and Special Program Jointure

CERTIFICATION: By signing this page I agree that the electronic data submitted is a complete and accurate statement of the financial operations and status of the local education agency for the fiscal year. It has been prepared in accordance with generally accepted accounting principles and established Commonwealth of PA reporting guidelines.



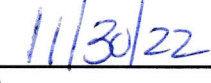
Chief School Administrator Signature



Date



Board Secretary Signature



Date

Sherri Molitoris

Contact Person

(610)767-9806 Ext :

Contact Person Telephone Number

smolitoris@nlsd.org

Contact Person E-mail Address

(610)767-9809

Contact Person Fax Number

Audit Certification
Annual Financial Report:
For Fiscal Year Ending **6/30/2022**
(Pursuant to PA School Code Section 218(b))

LEA Name : Northern Lehigh SD
AUN Number : 121394503
County : Lehigh

Audit Certification Due: 12/31/2022

This certification is applicable to the Annual Financial Report data submitted through the Consolidated Financial Reporting System (CFRS).

CERTIFICATION: By signing this page I agree that the financial statements of the school have been properly audited as noted above pursuant to Article XXIV, and in the auditor's professional opinion, the Annual Financial Report (PDE-2057) submitted through CFRS is materially consistent with the audited financial statements.

Chief School Administrator



Signature

11/30/22

Date

Board Secretary



Signature

11/30/22

Date

Sherri Molitoris

Contact Person

smolitoris@nlsd.org

Contact Person E-mail Address

(610)767-9806

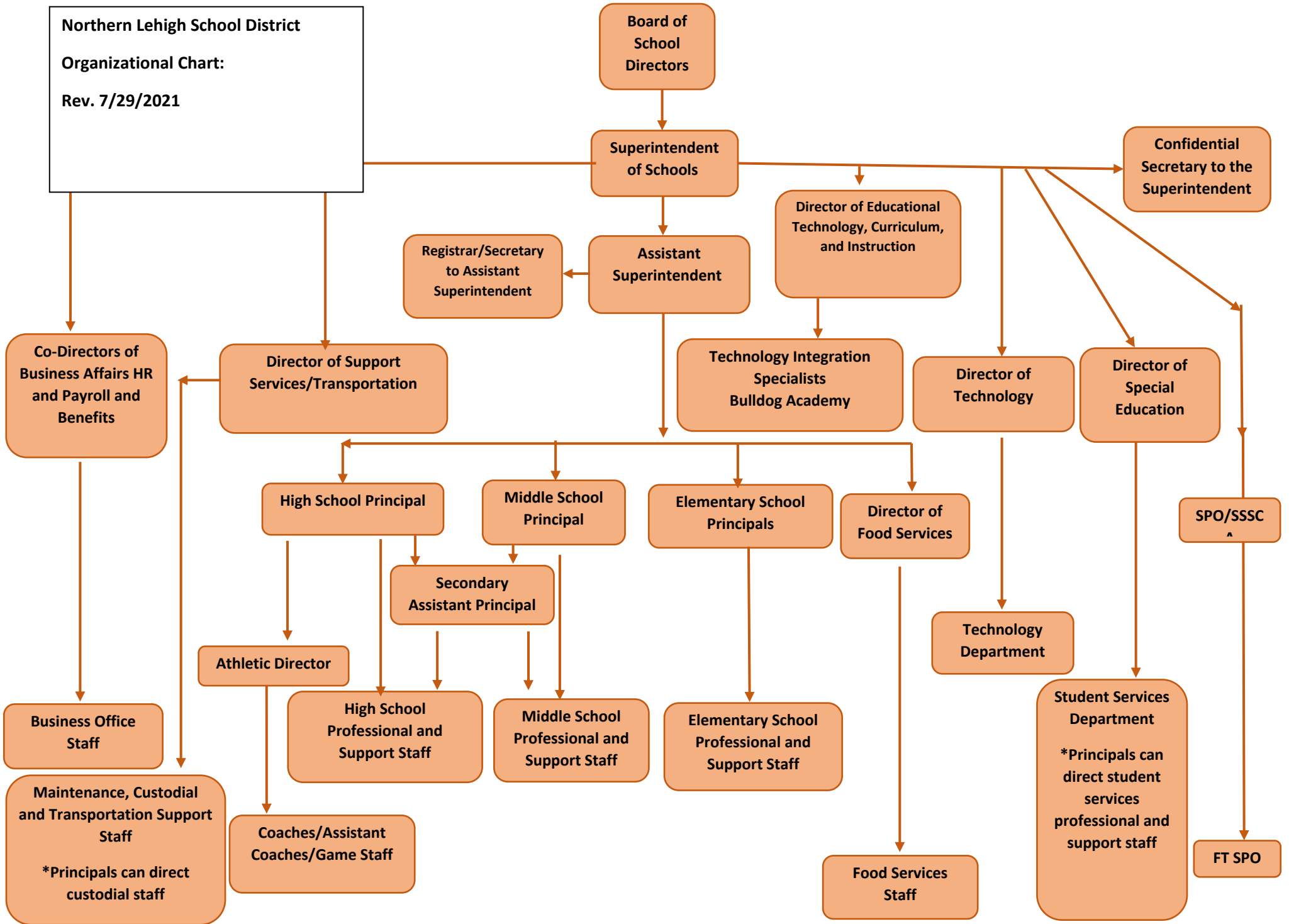
Ext :

Contact Person Telephone Number

(610)767-9809

Contact Person Fax Number

Northern Lehigh School District
Organizational Chart:
 Rev. 7/29/2021





Book	Policy Manual
Section	600 Finances
Title	GASB Statement 34
Code	622
Status	Active
Legal	1. 24 P.S. 613 2. 24 P.S. 218 Governmental Accounting Standards Board, Statement No. 34
Adopted	June 3, 2002
Last Revised	October 10, 2016

Purpose

The Board recognizes the need to implement the required accounting and financial reporting standards promulgated by the Governmental Accounting Standards Board (GASB). GASB Statement 34 was issued to provide new and additional information to the diverse users of district financial statements. In addition to the information contained in previous financial reporting, GASB 34 will now provide information in a highly aggregated manner looking at the long-term financial health of the school district. This new information will require school districts to account for capital assets in a manner different than previously recorded. The intent is to provide an additional set of entity-wide financial statements more similar to the private sector.[\[1\]](#)

The primary objectives of GASB 34 include:

1. New entity-wide financial statements reflecting the overall financial position of the district.
2. Long-term focus for school district activities.
3. Narrative overview and analysis.
4. Information on major funds.
5. Expanded budgetary reporting.

It is important to note that the methods, calculations and procedures for determining the budgetary process of the school district will not be affected by the implementation of the new standards. The information contained in previous financial statements will largely be in the same format.

Authority

Participation of the school district in any such activity shall be in accordance with Board policy.

Delegation of Responsibility

The Board of School Directors delegates to the Business Manager, in cooperation with the local independent auditor, the responsibility to coordinate the compilation and preparation of all information necessary to implement this policy in accordance with district administrative procedures.

The designated individual shall be responsible for implementing the necessary procedures to establish and maintain a fixed asset inventory, including depreciation schedules. Depreciation shall be computed on a straight-line basis over the useful lives of the assets. Periodically, management shall evaluate the estimated useful life of each depreciable asset to determine if revision of such estimate is required. Normal maintenance and repairs shall be charged to expense as incurred; major renewals and betterments that materially extend the life or increase the value of the asset shall be capitalized. A schedule of accumulated depreciation shall be consistent from year to year. The basis for depreciation, including groups of assets and useful lives, shall be in writing and submitted for review to the Board and independent auditors.

The Business Manager shall prepare the required Management Discussion and Analysis (MD&A). The MD&A shall be in the form required by GASB Statement 34.

Prior to submission of the MD&A, the district's independent auditors shall review the MD&A, in accordance with SAS No. 52, "Required Supplementary Information."

Guidelines**Requirements***Capitalized Assets –*

A capitalized asset shall be any asset acquired by donation or purchase that has a useful life of longer than one year or extends the life of another capitalized asset or increases its value and meets a specific dollar threshold. At management's discretion, and in conjunction with the local auditor, capital assets purchased with long-term debt may be capitalized regardless of the specific dollar threshold for the type of class of asset acquired.

In order to associate debt with acquired assets and to avoid net asset deficits, any asset that has been acquired with debt proceeds shall be capitalized, regardless of the cost of the asset. The asset life of these assets shall be considered relative to the time of the respective debt amortizations.

For all other assets not acquired by debt proceeds, the dollar value of any single item for inclusion in the fixed assets accounts shall be not less than \$2,500.

Assets that fall below the capitalization threshold for GASB 34 reporting purposes may still be significant for insurance, warranty service, and obsolescence/replacement policy tracking purposes. The district may record and maintain these non-GASB 34 asset inventories in subsidiary ledgers.

<u>Val Number</u>	<u>Description</u>	<u>Justification</u>
41005	Expenditures have been reported in Function 1700 – Higher Education Programs for Secondary Students. Please confirm that these costs were for services provided to your school’s secondary students. NOTE: Adult education programs and Community College sponsorship should be coded to Function 1600. Exp detail, Fund 10, Function 1700 total \$4,905.00	Students in the high school are encouraged to take college courses during their junior and senior years at Lehigh Carbon Community College. If the student receives a passing grade the district reimburses them for their tuition expense.
42420	Expenditure Detail: Total current year 2700-513 expenditure varies from prior year by 10%. Correct the data or enter a justification. 2700-513, AFR Exp Detail: \$1,798,320.29 2700-513, PY AFR Amount: \$1,397,044.65	During the 20-21 SY district students were only in session 4 days a week with one day being an asynchronous learning day with no transportation. During the 2021-2022 school year the district returned to 5 days a week in person instruction.
50450	SESS - 2350 Legal and Accounting Services: SESS Schedule amounts for Special Education vary from prior year by 40% or more. Correct the data or enter a justification. SESS Schedule 2350: \$15,002.00 Prior Year SESS Schedule 2350: \$10,294.00	Our legal/audit expenses for the 21/22 SY increased by 41.44% over the 20/21 SY. We had some employee and special education cases which required legal representation, completed Conrad Siegel actuarial study, and a portion of the 21/22 audit was paid.
60133	ICR - Since you are requesting an Indirect Cost Rate, you must upload an Organization Chart via the Submit Data/Documents menu link	Will be uploaded
60999	ICR - Since you are requesting an Indirect Cost Rate, you must upload the Capitalization Policy via the Submit Data/Documents menu link	Will be uploaded

Amounts Expressed in Whole Dollars	<u>General Fund</u> <u>(10)</u>	<u>Student Sponsored</u> <u>Activity Fund</u> <u>(21)</u>	<u>Public Purpose Trust</u> <u>(27)</u>	<u>Other Compt Approved</u> <u>(28)</u>	<u>Athletic / Activity</u> <u>(29)</u>
Assets And Deferred Outflows Of Resources					
Assets					
0100 Cash and Cash Equivalents	16,618,903				
0110 Investments					
0120 Taxes Receivable	1,836,206				
0130 Due From Other Funds	133,022				
0141 Due From Other Governments	1,586,847				
0142 State Revenue Receivable					
0143 Federal Revenue Receivable					
0145 Other Intergovernmental Revenue Receivable					
0146 Due from Primary Government					
0147 Due from Component Unit					
0150 Other Receivables	39,623				
0170 Inventories	49,252				
0180 Prepaid Expenses (Expenditures)	14,564				
0190 Other Current Assets	80,820				
Total Assets	\$20,359,237				
0910 Deferred Outflows of Resources					
Total Assets And Deferred Outflows Of Resources	\$20,359,237				

Amounts Expressed in Whole Dollars

<u>Capital Reserve (690.</u>	<u>Capital Reserve (1431)</u>	<u>Other Capital Projects</u>	<u>Debt Service</u>	<u>Permanent</u>
<u>1850)</u>	<u>(32)</u>	<u>Fund</u>	<u>(40)</u>	<u>(90)</u>
<u>(31)</u>		<u>(39)</u>		

Assets And Deferred Outflows Of Resources

Assets

0100 Cash and Cash Equivalents	144,183
0110 Investments	
0120 Taxes Receivable	
0130 Due From Other Funds	
0141 Due From Other Governments	
0142 State Revenue Receivable	
0143 Federal Revenue Receivable	
0145 Other Intergovernmental Revenue Receivable	
0146 Due from Primary Government	
0147 Due from Component Unit	
0150 Other Receivables	
0170 Inventories	
0180 Prepaid Expenses (Expenditures)	
0190 Other Current Assets	

Total Assets	\$144,183
---------------------	------------------

0910 Deferred Outflows of Resources

Total Assets And Deferred Outflows Of Resources	\$144,183
--	------------------

Amounts Expressed in Whole Dollars

Total Governmental Funds

Assets And Deferred Outflows Of Resources

Assets	
0100 Cash and Cash Equivalents	16,763,086
0110 Investments	
0120 Taxes Receivable	1,836,206
0130 Due From Other Funds	133,022
0141 Due From Other Governments	1,586,847
0142 State Revenue Receivable	
0143 Federal Revenue Receivable	
0145 Other Intergovernmental Revenue Receivable	
0146 Due from Primary Government	
0147 Due from Component Unit	
0150 Other Receivables	39,623
0170 Inventories	49,252
0180 Prepaid Expenses (Expenditures)	14,564
0190 Other Current Assets	80,820
Total Assets	\$20,503,420
0910 Deferred Outflows of Resources	
Total Assets And Deferred Outflows Of Resources	\$20,503,420

Amounts Expressed in Whole Dollars

	<u>General Fund</u> <u>(10)</u>	<u>Student Sponsored</u> <u>Activity Fund</u> <u>(21)</u>	<u>Public Purpose Trust</u> <u>(27)</u>	<u>Other Compt Approved</u> <u>(28)</u>	<u>Athletic / Activity</u> <u>(29)</u>
Liabilities And Deferred Inflows Of Resources And Fund Balances					
Liabilities					
0400 Due to Other Funds	202,650				
0411 Due to Other Governments	255,521				
0412 Due to Primary Government					
0413 Due to Component Unit					
0420 Accounts Payable	157,805				
0430 Contracts Payable					
0440 Current Portion of Long-Term Debt	254,171				
0450 Short-Term Payables					
0461 Accrued Salaries and Benefits	1,875,440				
0462 Payroll Deductions and Withholding	1,315,565				
0480 Unearned Revenues	5,671				
0490 Other Current Liabilities	2,021				
Total Liabilities	\$4,068,844				
0950 Deferred Inflows of Resources	1,613,879				
Fund Balances					
0810 Nonspendable Fund Balance	63,816				
0820 Restricted Fund Balance	140,390				
0830 Committed Fund Balance	2,148,942				
0840 Assigned Fund Balance	5,543,926				
0850 Unassigned Fund Balance	6,779,440				
Total Fund Balances	\$14,676,514				
Total Liabilities, Deferred Inflows Of Resources And Fund Balances	\$20,359,237				

Amounts Expressed in Whole Dollars	<u>Capital Reserve (690.</u>	<u>Capital Reserve (1431)</u>	<u>Other Capital Projects</u>	<u>Debt Service</u>	<u>Permanent</u>
	<u>1850)</u>	<u>(32)</u>	<u>Fund</u>	<u>(40)</u>	<u>(90)</u>
	<u>(31)</u>		<u>(39)</u>		

Liabilities And Deferred Inflows Of Resources And Fund Balances

Liabilities					
0400 Due to Other Funds					
0411 Due to Other Governments					
0412 Due to Primary Government					
0413 Due to Component Unit					
0420 Accounts Payable					
0430 Contracts Payable					
0440 Current Portion of Long-Term Debt					
0450 Short-Term Payables					
0461 Accrued Salaries and Benefits					
0462 Payroll Deductions and Withholding					
0480 Unearned Revenues					
0490 Other Current Liabilities					
Total Liabilities					
0950 Deferred Inflows of Resources					
Fund Balances					
0810 Nonspendable Fund Balance					
0820 Restricted Fund Balance		144,183			
0830 Committed Fund Balance					
0840 Assigned Fund Balance					
0850 Unassigned Fund Balance					
Total Fund Balances			\$144,183		
Total Liabilities, Deferred Inflows Of Resources And Fund Balances			\$144,183		

Amounts Expressed in Whole Dollars

Total Governmental Funds

Liabilities And Deferred Inflows Of Resources And Fund Balances

Liabilities

0400 Due to Other Funds	202,650
0411 Due to Other Governments	255,521
0412 Due to Primary Government	
0413 Due to Component Unit	
0420 Accounts Payable	157,805
0430 Contracts Payable	
0440 Current Portion of Long-Term Debt	254,171
0450 Short-Term Payables	
0461 Accrued Salaries and Benefits	1,875,440
0462 Payroll Deductions and Withholding	1,315,565
0480 Unearned Revenues	5,671
0490 Other Current Liabilities	2,021

Total Liabilities \$4,068,844

0950 Deferred Inflows of Resources	1,613,879
------------------------------------	-----------

Fund Balances

0810 Nonspendable Fund Balance	63,816
0820 Restricted Fund Balance	284,573
0830 Committed Fund Balance	2,148,942
0840 Assigned Fund Balance	5,543,926
0850 Unassigned Fund Balance	6,779,440

Total Fund Balances \$14,820,697

Total Liabilities, Deferred Inflows Of Resources And Fund Balances \$20,503,420

Amounts Expressed in Whole Dollars	<u>General Fund</u> <u>(10)</u>	<u>Student Sponsored</u> <u>Activity Fund</u> <u>(21)</u>	<u>Public Purpose Trust</u> <u>(27)</u>	<u>Other Compt Approved</u> <u>(28)</u>	<u>Athletic / Activity</u> <u>(29)</u>
Revenues					
6000 Revenue from Local Sources	20,039,386				
7000 Revenue from State Sources	14,344,079				
8000 Revenue from Federal Sources	2,538,270				
Total Revenues	\$36,921,735				
Expenditures					
1000 Instruction	20,460,099				
2000 Support Services	11,657,736				
3000 Operation of Non-Instructional Services	946,570				
4000 Facilities Acquisition, Construction and Improvement Services	421,817				
5110 Debt Service	1,030,878				
5130 Refund of Prior Year Revenues / Receipts	37,601				
5140 Leases					
Total Expenditures	\$34,554,701				
Excess (Deficiency) Of Revenues Over Expenditures	\$2,367,034				
Other Financing Sources (Uses)					
9110 Face Value of Bonds Issued					
9120 Proceeds from Refunding of Bonds					
9130 Bond Premiums					
9200 Proceeds from Extended-Term Financing and Leases	142,316				
9300 Interfund Transfers - IN					
9400 Sale of or Compensation for Loss of Fixed Assets					
9710 Transfers from Component Units					
9720 Transfers from Primary Governments					
9910 Other Financing Sources Not Listed in the 9000 Series					
9990 Insurance Recoveries	21,257				
5120 Debt Service – Refunded Bonds					
5150 Bond Discounts					
5200 Interfund Transfers – Out					
5300 Transfers Out to Component Units/Primary Governments					
Total Other Financing Sources (Uses)	\$163,573				

Amounts Expressed in Whole Dollars	<u>Capital Reserve (690.1850)</u> <u>(31)</u>	<u>Capital Reserve (1431)</u> <u>(32)</u>	<u>Other Capital Projects</u> <u>Fund</u> <u>(39)</u>	<u>Debt Service</u> <u>(40)</u>	<u>Permanent</u> <u>(90)</u>
Revenues					
6000 Revenue from Local Sources			188		
7000 Revenue from State Sources					
8000 Revenue from Federal Sources					
Total Revenues			\$188		
Expenditures					
1000 Instruction					
2000 Support Services					
3000 Operation of Non-Instructional Services					
4000 Facilities Acquisition, Construction and Improvement Services					
5110 Debt Service					
5130 Refund of Prior Year Revenues / Receipts					
5140 Leases					
Total Expenditures					
Excess (Deficiency) Of Revenues Over Expenditures			\$188		
Other Financing Sources (Uses)					
9110 Face Value of Bonds Issued					
9120 Proceeds from Refunding of Bonds					
9130 Bond Premiums					
9200 Proceeds from Extended-Term Financing and Leases					
9300 Interfund Transfers - IN					
9400 Sale of or Compensation for Loss of Fixed Assets					
9710 Transfers from Component Units					
9720 Transfers from Primary Governments					
9910 Other Financing Sources Not Listed in the 9000 Series					
9990 Insurance Recoveries					
5120 Debt Service – Refunded Bonds					
5150 Bond Discounts					
5200 Interfund Transfers – Out					
5300 Transfers Out to Component Units/Primary Governments					
Total Other Financing Sources (Uses)					

Amounts Expressed in Whole Dollars	<u>Total Governmental Funds</u>
Revenues	
6000 Revenue from Local Sources	20,039,574
7000 Revenue from State Sources	14,344,079
8000 Revenue from Federal Sources	2,538,270
Total Revenues	\$36,921,923
Expenditures	
1000 Instruction	20,460,099
2000 Support Services	11,657,736
3000 Operation of Non-Instructional Services	946,570
4000 Facilities Acquisition, Construction and Improvement Services	421,817
5110 Debt Service	1,030,878
5130 Refund of Prior Year Revenues / Receipts	37,601
5140 Leases	
Total Expenditures	\$34,554,701
Excess (Deficiency) Of Revenues Over Expenditures	\$2,367,222
Other Financing Sources (Uses)	
9110 Face Value of Bonds Issued	
9120 Proceeds from Refunding of Bonds	
9130 Bond Premiums	
9200 Proceeds from Extended-Term Financing and Leases	142,316
9300 Interfund Transfers - IN	
9400 Sale of or Compensation for Loss of Fixed Assets	
9710 Transfers from Component Units	
9720 Transfers from Primary Governments	
9910 Other Financing Sources Not Listed in the 9000 Series	
9990 Insurance Recoveries	21,257
5120 Debt Service – Refunded Bonds	
5150 Bond Discounts	
5200 Interfund Transfers – Out	
5300 Transfers Out to Component Units/Primary Governments	
Total Other Financing Sources (Uses)	\$163,573

Amounts Expressed in Whole Dollars	<u>General Fund</u> <u>(10)</u>	<u>Student Sponsored</u> <u>Activity Fund</u> <u>(21)</u>	<u>Public Purpose Trust</u> <u>(27)</u>	<u>Other Compt Approved</u> <u>(28)</u>	<u>Athletic / Activity</u> <u>(29)</u>
Special And Extraordinary Items					
9920 Special Items – Gains					
9930 Extraordinary Items – Gains					
5520 Special Items – Losses					
5530 Extraordinary Items – Losses					
Net Change In Fund Balances	\$2,530,607				
Fund Balance					
0001 Fund Balance - Beginning of Fiscal Year	12,145,907				
Fund Balance - End Of Year	\$14,676,514				

Amounts Expressed in Whole Dollars	<u>Capital Reserve (690.</u> <u>1850</u> <u>(31)</u>	<u>Capital Reserve (1431)</u> <u>(32)</u>	<u>Other Capital Projects</u> <u>Fund</u> <u>(39)</u>	<u>Debt Service</u> <u>(40)</u>	<u>Permanent</u> <u>(90)</u>
Special And Extraordinary Items					
9920 Special Items – Gains					
9930 Extraordinary Items – Gains					
5520 Special Items – Losses					
5530 Extraordinary Items – Losses					
Net Change In Fund Balances					\$188
Fund Balance					
0001 Fund Balance - Beginning of Fiscal Year				143,995	
Fund Balance - End Of Year					\$144,183

Amounts Expressed in Whole Dollars	<u>Total Governmental Funds</u>
Special And Extraordinary Items	
9920 Special Items – Gains	
9930 Extraordinary Items – Gains	
5520 Special Items – Losses	
5530 Extraordinary Items – Losses	
Net Change In Fund Balances	\$2,530,795
Fund Balance	
0001 Fund Balance - Beginning of Fiscal Year	12,289,902
Fund Balance - End Of Year	\$14,820,697

Amounts Expressed in Whole Dollars	<u>Food Service</u> <u>(51)</u>	<u>Child Care</u> <u>Operations</u> <u>(52)</u>	<u>Other Enterprise</u> <u>(58)</u>	<u>TOTAL</u>	<u>Internal Service</u> <u>(60)</u>
Assets And Deferred Outflows Of Resources					
Current Assets					
0100 Cash and Cash Equivalents	197,124			197,124	
0110 Investments					
0130 Due From Other Funds	202,650			202,650	
0141 Due From Other Governments					
0142 State Revenue Receivable	907			907	
0143 Federal Revenue Receivable	28,787			28,787	
0146 Due from Primary Government					
0147 Due from Component Unit					
0150 Other Receivables	969			969	
0170 Inventories	30,200			30,200	
0180 Prepaid Expenses (Expenditures)					
0190 Other Current Assets					
Total Current Assets	\$460,637			\$460,637	
Noncurrent Assets					
0211 Land					
0212 Site Improvements (Net)					
0220 Buildings and Building Improvements (Net)					
0230 Machinery, Equipment and Furniture (Net)	85,005			85,005	
0250 Construction in Progress					
0260 Long Term Prepayments					
0290 Other Noncurrent Assets					
Total Noncurrent Assets	\$85,005			\$85,005	
0910 Deferred Outflows of Resources	168,434			168,434	
Total Assets And Deferred Outflows Of Resources	\$714,076			\$714,076	

Amounts Expressed in Whole Dollars	<u>Food Service</u> <u>(51)</u>	<u>Child Care</u> <u>Operations</u> <u>(52)</u>	<u>Other Enterprise</u> <u>(58)</u>	<u>TOTAL</u>	<u>Internal Service</u> <u>(60)</u>
Liabilities And Deferred Inflows Of Resources And Net Position					
Current Liabilities					
0400 Due to Other Funds	133,022			133,022	
0411 Due to Other Governments					
0413 Due to Component Unit					
0420 Accounts Payable	2,753			2,753	
0430 Contracts Payable					
0440 Current Portion of Long-Term Debt					
0450 Short-Term Payables					
0461 Accrued Salaries and Benefits	8,294			8,294	
0462 Payroll Deductions and Withholding					
0480 Unearned Revenues	1,665			1,665	
0490 Other Current Liabilities					
Total Current Liabilities	\$145,734			\$145,734	
Noncurrent Liabilities					
0510 Bonds Payable					
0520 Extended-Term Financing Agreements Payable					
0530 Lease Obligations					
0540 Accumulated Compensated Absences	4,938			4,938	
0550 Authority Lease Obligations					
0560 Other Post-Employment Benefits (OPEB)	64,235			64,235	
0570 Net Pension Liability	1,175,093			1,175,093	
0599 Other Noncurrent Liabilities					
Total Noncurrent Liabilities	\$1,244,266			\$1,244,266	
Total Liabilities	\$1,390,000			\$1,390,000	
0950 Deferred Inflows of Resources	197,857			197,857	
Net Position					
0791 Net Investment in Capital Assets	85,005			85,005	
0008 Restricted Net Position (0792 – 0798)					
0799 Unrestricted Net Position	(958,786)			(958,786)	
Total Net Position	(\$873,781)			(\$873,781)	
Total Liabilities And Deferred Inflows Of Resources And Net Position	\$714,076			\$714,076	

Amounts Expressed in Whole Dollars	<u>Food Service</u> <u>(51)</u>	<u>Child Care Operations</u> <u>(52)</u>	<u>Other Enterprise</u> <u>(58)</u>	<u>TOTAL</u>	<u>Internal Service</u> <u>(60)</u>
Operating Revenues					
6600 Food Service Revenue	51,217			51,217	
0071 Charges for Services					
0072 Other Operating Revenue	16,769			16,769	
Total Operating Revenues	\$67,986			\$67,986	
Operating Expenses					
100 Personnel Services – Salaries	415,467			415,467	
200 Personnel Services – Employee Benefits	156,514			156,514	
300 Purchased Professional and Technical Services					
400 Purchased Property Services	7,037			7,037	
500 Other Purchased Services	2,246			2,246	
600 Supplies	347,121			347,121	
740 Depreciation	5,410			5,410	
810 Dues and Fees					
880 Refunds of Prior Years' Receipts					
890 Miscellaneous Expenditures	2,132			2,132	
Total Operating Expenses	\$935,927			\$935,927	
Operating Income (Loss)	(\$867,941)			(\$867,941)	
Non Operating Revenues (Expenses)					
6500 Earnings on Investments					
6920 Contributions and Donations from Private Sources					
6930 Gains or Losses on Sale of Fixed Assets					
6991 Refunds of a Prior Year Expenditure					
7000 Revenue from State Sources	131,887			131,887	
8000 Revenue from Federal Sources	1,082,322			1,082,322	
9990 Insurance Recoveries					
820 Claims and Judgments Against the LEA					
830 Interest					
TOTAL Non Operating Revenues (Expenses)	\$1,214,209			\$1,214,209	
Income (Loss) Before Contributions And Transfers	\$346,268			\$346,268	

Amounts Expressed in Whole Dollars	<u>Food Service</u> <u>(51)</u>	<u>Child Care Operations</u> <u>(52)</u>	<u>Other Enterprise</u> <u>(58)</u>	<u>TOTAL</u>	<u>Internal Service</u> <u>(60)</u>
Contributions, Transfers, and Special and Extraordinary Items					
5200 Interfund Transfers – Out					
5300 Transfers Out to Component Units/Primary Governments					
5520 Special Items – Losses					
5530 Extraordinary Items – Losses					
9300 Interfund Transfers - IN					
9500 Capital Contributions					
9700 Transfers IN From Component Units/Primary Governments					
9920 Special Items – Gains					
9930 Extraordinary Items – Gains					
Change In Net Position	\$346,268			\$346,268	
0002 Net Position - Beginning of Fiscal Year	(1,220,049)			(1,220,049)	
0003 Accounting Changes / Residual Equity Transfers					
Net Position - End Of Year	(\$873,781)			(\$873,781)	

Amounts Expressed in Whole Dollars	<u>Food Service</u> <u>(51)</u>	<u>Child Care Operations</u> <u>(52)</u>	<u>Other Enterprise</u> <u>(58)</u>	<u>TOTAL</u>	<u>Internal Service(60)</u>
Cash Flows From Operating Activities					
0011 Cash Receipts From Users	53,677			53,677	
0012 Cash Receipts From Assessments Made to Other Funds					
0013 Cash Receipts From Earnings on Investments					
0014 Cash Receipts From Other Operating Revenue	16,769			16,769	
0015 Cash Payments To Employees For Services	770,154			770,154	
0016 Cash Payments For Insurance Claims					
0017 Cash Payments To Suppliers For Goods and Services	348,294			348,294	
0018 Cash Payments For Other Operating Expenses	2,132			2,132	
Net Cash Provided By (Used For) Operating Activities	(\$1,050,134)			(\$1,050,134)	
Cash Flows From Non-Capital Financing Activities					
0021 Receipts From Local Sources - 6000					
0022 Receipts From State Sources - 7000	132,225			132,225	
0023 Receipts From Federal Sources -8000	1,033,256			1,033,256	
0024 Notes and Loans Received (Repaid)					
0025 Interest Paid on Notes/Loans - 5100-830					
0026 Operating Transfers In (Out)/Residual Equity Trans					
0027 Operating Transfers In (Out) Primary Government / Comp Unit					
0028 Receipts From Refund of Prior Year Expenditures - 6991					
0029 Special and Extraordinary Gains (losses)					
0030 Receipts from Insurance Recoveries -9990					
Net Cash Prov By (Used for) Non-Capital Financing Activities	\$1,165,481			\$1,165,481	
Cash Flows From Capital and Related Financing Activities					
0031 Payments For Fac Acq, Const, and Imp - 4000	(14,126)			(14,126)	
0032 Gain / (Loss) on Sale of Fixed Assets - 6930					
0033 Proceeds From Extended Term Financing - 9200					
0034 Principal Paid on Financing Agreements					
0035 Interest Paid on Financing Agreements - 5100-830					
0036 (Inc) Dec in Contributed Capital					
Net Cash Prov By (Used for) Capital and Related Financing Activities	(\$14,126)			(\$14,126)	
Cash Flows From Investing Activities					
0041 Earnings on Investments - 6500					
0042 Purchase of Inv Securities / Deposits to Inv Pools					
0043 Receipts From Investment Pool Withdrawals					
0044 Proceeds from Sale and Maturity of Inv Securities					

LEA : 121394503 Northern Lehigh SD

Printed 11/30/2022 8:36:59 PM

0045 Loans Received (Paid)

Net Cash Prov By (Used for) Investing Activities

	<u>Food Service</u> <u>(51)</u>	<u>Child Care Operations</u> <u>(52)</u>	<u>Other Enterprise</u> <u>(58)</u>	<u>TOTAL</u>	<u>Internal Service</u> <u>(60)</u>
Net Increase (Decrease) in Cash Flows	101,221			101,221	
0004 Cash and Cash Equivalents Beginning of Year	95,903			95,903	
Cash and Cash Equivalents at Year End	\$197,124			\$197,124	

Reconciliation of Operating Income (Loss) To Net Cash Provided by (Used For) Operating Activities

0005 Operating Income (Loss) per REP	(867,941)			(867,941)	
Adjustments					
0051 Depreciation and Net Amortization	5,410			5,410	
0052 Provision for Uncollectible Accounts					
0053 Other Adjustments	36,738			36,738	
Effect of Changes in Assets, Liabilities, Deferred Outflows and Deferred Inflows					
0054 (Inc) Dec In Accounts Receivable (0120-0150)	2,544			2,544	
0055 Advances to Other Funds (0160)	(146,369)			(146,369)	
0056 (Inc) Dec in Inventories (0170)	7,901			7,901	
0057 (Inc) Dec in Prepaid Expenses (0180)					
0058 (Inc) Dec in Other Current or Noncurrent Assets					
0064 Deferred Outflows (0910)	(35,531)			(35,531)	
0059 Inc (Dec) in Accounts Payable (0400-0450)	(6,201)			(6,201)	
0060 Inc (Dec) in Accrued Salaries/Benefits (0461)	(4,362)			(4,362)	
0065 Inc (Dec) in Net Pension Liabilities (0570)	(184,831)			(184,831)	
0066 Inc (Dec) in Other Postemp Benefit Oblig (0560)	4,874			4,874	
0061 Inc (Dec) in Payroll Deductions/Withholding (0462)					
0062 Inc (Dec) in Unearned Revenue (0480)					
0063 Inc (Dec) in Other Current or Noncurrent Liabilities	(3,776)			(3,776)	
0067 Deferred Inflows (0950)	141,410			141,410	
Total Adjustments	(\$182,193)			(\$182,193)	
Cash Provided By (Used for) Total	(\$1,050,134)			(\$1,050,134)	

COMBINED STATEMENT OF CASH FLOWS
SCHEDULE OF NONCASH INVESTING, CAPITAL, AND FINANCING ACTIVITIES

Explanation of Transaction and Balance Sheet Effect	Amount
Total	

LEA : 121394503 Northern Lehigh SD

Printed 11/30/2022 8:37:03 PM

Amounts Expressed in Whole Dollars

Private Purpose Trust
(71)

Investment Trust
(72)

Pension Trust
(73)

Student Activity Custodial
(81)

Assets And Deferred Outflows Of Resources

Assets

0100 Cash and Cash Equivalents				57,466
0110 Investments				
0130 Due From Other Funds				
0140 Due from Other Governments, Primary Government and Component Units				
0150 Other Receivables				194
0170 Inventories				
0180 Prepaid Expenses (Expenditures)				
0190 Other Current Assets				
0220 Buildings and Building Improvements (Net)				
0230 Machinery, Equipment and Furniture (Net)				

Total Assets **\$57,660**

0910 Deferred Outflows of Resources

Total Assets And Deferred Outflows Of Resources **\$57,660**

LEA : 121394503 Northern Lehigh SD

Printed 11/30/2022 8:37:03 PM

Amounts Expressed in Whole Dollars	<u>Other Custodial</u> <u>(89)</u>	<u>Fiduciary Component Units</u> <u>(98)</u>	<u>Total Fiduciary Funds</u>
Assets And Deferred Outflows Of Resources			
Assets			
0100 Cash and Cash Equivalents			57,466
0110 Investments			
0130 Due From Other Funds			
0140 Due from Other Governments, Primary Government and Component Units			
0150 Other Receivables			194
0170 Inventories			
0180 Prepaid Expenses (Expenditures)			
0190 Other Current Assets			
0220 Buildings and Building Improvements (Net)			
0230 Machinery, Equipment and Furniture (Net)			
Total Assets			\$57,660
0910 Deferred Outflows of Resources			
Total Assets And Deferred Outflows Of Resources			\$57,660

LEA : 121394503 Northern Lehigh SD

Printed 11/30/2022 8:37:03 PM

Amounts Expressed in Whole Dollars	<u>Private Purpose Trust</u> (71)	<u>Investment Trust</u> (72)	<u>Pension Trust</u> (73)	<u>Student Activity Custodial</u> (81)
Liabilities, Deferred Inflows Of Resources And Net Position				
Liabilities				
0400 Due to Other Funds				84
0410 Due to Other Governments, Primary Government and Component Units				
0420 Accounts Payable				20
0430 Contracts Payable				
0450 Short-Term Payables				
0460 Payroll Accruals and Withholdings				
0480 Unearned Revenues				
0490 Other Current Liabilities				
Total Liabilities				\$104
0950 Deferred Inflows of Resources				
Net Position				
0791 Net Investment in Capital Assets				
0009 Restricted Net Position (0792 – 0798)				57,556
0799 Unrestricted Net Position				
Total Net Position				\$57,556
Total Liabilities, Deferred Inflows Of Resources And Net Position				\$57,660

LEA : 121394503 Northern Lehigh SD

Printed 11/30/2022 8:37:03 PM

Amounts Expressed in Whole Dollars	<u>Other Custodial</u> <u>(89)</u>	<u>Fiduciary Component Units</u> <u>(98)</u>	<u>Total Fiduciary Funds</u>
Liabilities, Deferred Inflows Of Resources And Net Position			
Liabilities			
0400 Due to Other Funds			84
0410 Due to Other Governments, Primary Government and Component Units			
0420 Accounts Payable			20
0430 Contracts Payable			
0450 Short-Term Payables			
0460 Payroll Accruals and Withholdings			
0480 Unearned Revenues			
0490 Other Current Liabilities			
Total Liabilities			\$104
0950 Deferred Inflows of Resources			
Net Position			
0791 Net Investment in Capital Assets			
0009 Restricted Net Position (0792 – 0798)			57,556
0799 Unrestricted Net Position			
Total Net Position			\$57,556
Total Liabilities, Deferred Inflows Of Resources And Net Position			\$57,660

Amounts Expressed in Whole Dollars	<u>Private Purpose Trust</u> (71)	<u>Investment Trust</u> (72)	<u>Pension Trust</u> (73)	<u>Student Activity</u> <u>Custodial</u> (81)	<u>Other Custodial</u> (89)	<u>Fiduciary Component</u> <u>Units</u> (98)
Additions						
0091 Gifts and Contributions				53,252		
0095 Net Investment Earnings						
0092 Other Additions				6,524		
Deductions						
0093 Scholarships Awarded						
0094 Other Deductions				71,645		
Change In Net Position				(\$11,869)		
0006 Net Position – Beginning of Fiscal Year				69,425		
0007 Net Position Held in Trust for Pension Benefits						
Net Position - End of Fiscal Year				\$57,556		

Amounts Expressed in Whole Dollars	<u>Total Fiduciary Funds</u>
Additions	
0091 Gifts and Contributions	53,252
0095 Net Investment Earnings	
0092 Other Additions	6,524
Deductions	
0093 Scholarships Awarded	
0094 Other Deductions	71,645
Change in Net Position	(\$11,869)
0006 Net Position – Beginning of Fiscal Year	69,425
0007 Net Position Held in Trust for Pension Benefits	
Net Position - End of Fiscal Year	\$57,556

	<u>Revenue Reported In Current Year</u>	<u>Current Year Tax Accrual</u>	<u>Prior Year Tax Accrual</u>	<u>Taxes Collected In Current Year</u>
<u>Revenue from Local Sources</u>				
6111 Current Real Estate Taxes	16,394,390.99			16,394,390.99
6112 Interim Real Estate Taxes	28,916.67			28,916.67
6113 Public Utility Realty Taxes	17,198.31			17,198.31
6114 Payments in Lieu of Current Taxes - State / Local	31,775.78			31,775.78
6120 Current Per Capita Taxes, Section 679	31,946.40			31,946.40
6141 Current Act 511 Per Capita Taxes	31,946.40			31,946.40
6143 Current Act 511 Local Services Taxes	14,481.00			14,481.00
6151 Current Act 511 Earned Income Taxes	1,685,397.87			1,685,397.87
6153 Current Act 511 Real Estate Transfer Taxes	345,272.80			345,272.80
6411 Delinquent Real Estate Taxes	812,382.46			812,382.46
6420 Delinquent Per Capita Taxes, Section 679	5,277.31			5,277.31
6440 Delinquent Local Enabling Taxes - Flat Rate Assessments	5,277.34			5,277.34
6500 Earnings on Investments	37,931.64			
6700 Revenues from LEA Activities	52,261.29			
6831 Federal Revenue Received from Other Pennsylvania Public LEAs	2,841.59			
6832 Federal IDEA Revenue Received as Pass Through	302,868.00			
6910 Rentals	29,754.56			
6920 Contributions and Donations from Private Sources	118,874.41			
6991 Refunds of a Prior Year Expenditure	47,551.53			
6999 Other Revenues Not Specified Above	43,040.14			
TOTAL Revenue from Local Sources	\$20,039,386.49			\$19,404,263.33

**Revenue Reported
In Current Year**

Revenue from State Sources

7111 Basic Education Funding-Formula	7,242,379.99		
7112 Basic Education Funding-Social Security	574,599.46		
7160 Tuition for Orphans Subsidy	74,887.70		
7271 Special Education funds for School-Aged Pupils	1,489,211.25		
7311 Pupil Transportation Subsidy	644,300.39		
7312 Nonpublic and Charter School Pupil Transportation Subsidy	16,170.00		
7320 Rental and Sinking Fund Payments / Building Reimbursement Subsidy	59,287.15		
7330 Health Services (Medical, Dental, Nurse, Act 25)	27,363.67		
7340 State Property Tax Reduction Allocation	950,278.91		
7361 School Safety and Security Grants	131,592.19		
7505 Ready to Learn Block Grant	298,608.00		
7820 State Share of Retirement Contributions	2,835,400.34		
TOTAL Revenue from State Sources	\$14,344,079.05		

**Revenue Reported
In Current Year**

Revenue from Federal Sources

8514 NCLB, Title I - Improving the Academic Achievement of the Disadvantaged	402,928.00			
8515 NCLB, Title II - Preparing, Training and Recruiting High Quality Teachers and Principals	60,448.00			
8517 NCLB, Title IV - 21St Century Schools	41,990.53			
8743 ESSER II - Elementary and Secondary School Emergency Relief Fund	640,006.06			
8744 ARP ESSER - Elementary and Secondary School Emergency Relief Fund	1,285,536.83			
8751 ARP ESSER Learning Loss	65,073.47			
8752 ARP ESSER Summer Programs	5,039.48			
8753 ARP ESSER Afterschool Programs	18,057.43			
8820 Medical Assistance Reimbursement for Administrative Claiming (Quarterly) Program	19,190.26			
TOTAL Revenue from Federal Sources	\$2,538,270.06			

	Revenue Reported In Current Year	
<u>Other Financing Sources</u>		
9290 Other Extended-Term Financing Proceeds	142,316.00	
9990 Insurance Recoveries	21,256.60	
TOTAL Other Financing Sources	\$163,572.60	
TOTAL FROM ALL SOURCES	\$37,085,308.20	\$19,404,263.33

LEA : 121394503 Northern Lehigh SD

Printed 11/30/2022 8:37:14 PM

	<u>General Fund (10)</u>	<u>Student Sponsored Activity Fund (21)</u>	<u>Public Purpose Trust (27)</u>	<u>Other Compt Approved (28)</u>	<u>Athletic / Activity (29)</u>	<u>Capital Reserve (690, 1850) (31)</u>
6000 Revenue from Local Sources						
6111 Current Real Estate Taxes	16,394,390.99					
6112 Interim Real Estate Taxes	28,916.67					
6113 Public Utility Realty Taxes	17,198.31					
6114 Payments in Lieu of Current Taxes - State / Local	31,775.78					
6120 Current Per Capita Taxes, Section 679	31,946.40					
6141 Current Act 511 Per Capita Taxes	31,946.40					
6143 Current Act 511 Local Services Taxes	14,481.00					
6151 Current Act 511 Earned Income Taxes	1,685,397.87					
6153 Current Act 511 Real Estate Transfer Taxes	345,272.80					
6411 Delinquent Real Estate Taxes	812,382.46					
6420 Delinquent Per Capita Taxes, Section 679	5,277.31					
6440 Delinquent Local Enabling Taxes - Flat Rate Assessments	5,277.34					
6500 Earnings on Investments	37,931.64					
6700 Revenues from LEA Activities	52,261.29					
6831 Federal Revenue Received from Other Pennsylvania Public LEAs	2,841.59					
6832 Federal IDEA Revenue Received as Pass Through	302,868.00					
6910 Rentals	29,754.56					
6920 Contributions and Donations from Private Sources	118,874.41					
6991 Refunds of a Prior Year Expenditure	47,551.53					
6999 Other Revenues Not Specified Above	43,040.14					
6000 Total Revenue from Local Sources	\$20,039,386.49					
7000 Revenue from State Sources						
7111 Basic Education Funding-Formula	7,242,379.99					
7112 Basic Education Funding-Social Security	574,599.46					
7160 Tuition for Orphans Subsidy	74,887.70					
7271 Special Education funds for School-Aged Pupils	1,489,211.25					
7311 Pupil Transportation Subsidy	644,300.39					
7312 Nonpublic and Charter School Pupil Transportation Subsidy	16,170.00					
7320 Rental and Sinking Fund Payments / Building Reimbursement Subsidy	59,287.15					
7330 Health Services (Medical, Dental, Nurse, Act 25)	27,363.67					
7340 State Property Tax Reduction Allocation	950,278.91					
7361 School Safety and Security Grants	131,592.19					
7505 Ready to Learn Block Grant	298,608.00					
7820 State Share of Retirement Contributions	2,835,400.34					
7000 Total Revenue from State Sources	\$14,344,079.05					

LEA : 121394503 Northern Lehigh SD

Printed 11/30/2022 8:37:14 PM

	<u>Capital Reserve</u> <u>(1431) (32)</u>	<u>Other Capital</u> <u>Projects Fund (39)</u>	<u>Debt Service (40)</u>	<u>Permanent (90)</u>	<u>Total</u>
6000 Revenue from Local Sources					
6111 Current Real Estate Taxes					16,394,390.99
6112 Interim Real Estate Taxes					28,916.67
6113 Public Utility Realty Taxes					17,198.31
6114 Payments in Lieu of Current Taxes - State / Local					31,775.78
6120 Current Per Capita Taxes, Section 679					31,946.40
6141 Current Act 511 Per Capita Taxes					31,946.40
6143 Current Act 511 Local Services Taxes					14,481.00
6151 Current Act 511 Earned Income Taxes					1,685,397.87
6153 Current Act 511 Real Estate Transfer Taxes					345,272.80
6411 Delinquent Real Estate Taxes					812,382.46
6420 Delinquent Per Capita Taxes, Section 679					5,277.31
6440 Delinquent Local Enabling Taxes - Flat Rate Assessments					5,277.34
6500 Earnings on Investments	188.46				38,120.10
6700 Revenues from LEA Activities					52,261.29
6831 Federal Revenue Received from Other Pennsylvania Public LEAs					2,841.59
6832 Federal IDEA Revenue Received as Pass Through					302,868.00
6910 Rentals					29,754.56
6920 Contributions and Donations from Private Sources					118,874.41
6991 Refunds of a Prior Year Expenditure					47,551.53
6999 Other Revenues Not Specified Above					43,040.14
6000 Total Revenue from Local Sources	\$188.46				\$20,039,574.95
7000 Revenue from State Sources					
7111 Basic Education Funding-Formula					7,242,379.99
7112 Basic Education Funding-Social Security					574,599.46
7160 Tuition for Orphans Subsidy					74,887.70
7271 Special Education funds for School-Aged Pupils					1,489,211.25
7311 Pupil Transportation Subsidy					644,300.39
7312 Nonpublic and Charter School Pupil Transportation Subsidy					16,170.00
7320 Rental and Sinking Fund Payments / Building Reimbursement Subsidy					59,287.15
7330 Health Services (Medical, Dental, Nurse, Act 25)					27,363.67
7340 State Property Tax Reduction Allocation					950,278.91
7361 School Safety and Security Grants					131,592.19
7505 Ready to Learn Block Grant					298,608.00
7820 State Share of Retirement Contributions					2,835,400.34
7000 Total Revenue from State Sources					\$14,344,079.05

	<u>General Fund (10)</u>	<u>Student Sponsored Activity Fund (21)</u>	<u>Public Purpose Trust (27)</u>	<u>Other Compt Approved (28)</u>	<u>Athletic / Activity (29)</u>	<u>Capital Reserve (690.1850) (31)</u>
8000 Revenue from Federal Sources						
8514 NCLB, Title I - Improving the Academic Achievement of the Disadvantaged	402,928.00					
8515 NCLB, Title II - Preparing, Training and Recruiting High Quality Teachers and Principals	60,448.00					
8517 NCLB, Title IV - 21st Century Schools	41,990.53					
8743 ESSER II - Elementary and Secondary School Emergency Relief Fund	640,006.06					
8744 ARP ESSER - Elementary and Secondary School Emergency Relief Fund	1,285,536.83					
8751 ARP ESSER Learning Loss	65,073.47					
8752 ARP ESSER Summer Programs	5,039.48					
8753 ARP ESSER Afterschool Programs	18,057.43					
8820 Medical Assistance Reimbursement for Administrative Claiming (Quarterly) Program	19,190.26					
8000 Total Revenue from Federal Sources	\$2,538,270.06					
9000 Other Financing Sources						
9290 Other Extended-Term Financing Proceeds	142,316.00					
9990 Insurance Recoveries	21,256.60					
9000 Total Other Financing Sources	\$163,572.60					
Total From All Sources	\$37,085,308.20					

	<u>Capital Reserve</u> <u>(1431) (32)</u>	<u>Other Capital</u> <u>Projects Fund (39)</u>	<u>Debt Service (40)</u>	<u>Permanent (90)</u>	<u>Total</u>
8000 Revenue from Federal Sources					
8514 NCLB, Title I - Improving the Academic Achievement of the Disadvantaged					402,928.00
8515 NCLB, Title II - Preparing, Training and Recruiting High Quality Teachers and Principals					60,448.00
8517 NCLB, Title IV - 21st Century Schools					41,990.53
8743 ESSER II - Elementary and Secondary School Emergency Relief Fund					640,006.06
8744 ARP ESSER - Elementary and Secondary School Emergency Relief Fund					1,285,536.83
8751 ARP ESSER Learning Loss					65,073.47
8752 ARP ESSER Summer Programs					5,039.48
8753 ARP ESSER Afterschool Programs					18,057.43
8820 Medical Assistance Reimbursement for Administrative Claiming (Quarterly) Program					19,190.26
8000 Total Revenue from Federal Sources					\$2,538,270.06
9000 Other Financing Sources					
9290 Other Extended-Term Financing Proceeds					142,316.00
9990 Insurance Recoveries					21,256.60
9000 Total Other Financing Sources					\$163,572.60
Total From All Sources	\$188.46				\$37,085,496.66

	<u>General Fund (10)</u>	<u>Student Sponsored Activity Fund (21)</u>	<u>Public Purpose Trust (27)</u>	<u>Other Compt Approved (28)</u>	<u>Athletic / Activity (29)</u>	<u>Capital Reserve (690. 1850) (31)</u>
Revenue from Local Sources	20,039,386.49					
Revenue from State Sources	14,344,079.05					
Revenue from Federal Sources	2,538,270.06					
Other Financing Sources	163,572.60					
Total From All Sources	\$37,085,308.20					

	<u>Capital Reserve (1431)</u> <u>(32)</u>	<u>Other Capital Projects</u> <u>Fund (39)</u>	<u>Debt Service (40)</u>	<u>Permanent (90)</u>	<u>Total</u>
Revenue from Local Sources	188.46				20,039,574.95
Revenue from State Sources					14,344,079.05
Revenue from Federal Sources					2,538,270.06
Other Financing Sources					163,572.60
Total From All Sources	\$188.46				\$37,085,496.66

General Fund (10)

	<u>Total</u>
1000 Instruction	
100 Personnel Services – Salaries	
100 Personnel Services – Salaries	9,141,693.25
Total Personnel Services – Salaries	\$9,141,693.25
200 Personnel Services – Employee Benefits	
210 Group Insurance – Contracted Provider	1,730,223.00
220 Social Security Contributions	697,701.11
230 PSERS Retirement Contributions	3,144,774.29
250 Unemployment Compensation	953.40
260 Workers' Compensation	28,996.22
Total Personnel Services – Employee Benefits	\$5,602,648.02
300 Purchased Professional and Technical Services	
322 Professional Educational Services – Ius	1,244,561.14
329 Professional Educational Services – Other	350,064.05
330 Other Professional Services	4,757.82
Total Purchased Professional and Technical Services	\$1,599,383.01
400 Purchased Property Services	
430 Repairs and Maintenance Services	56,484.20
440 Rentals	7,218.28
Total Purchased Property Services	\$63,702.48
500 Other Purchased Services	
510 Student Transportation Services	7,943.47
561 Tuition To Other School Districts Within the State	99,014.87
562 Tuition To Pennsylvania Charter Schools	1,747,745.81
564 Tuition To Career and Technology Centers	1,227,844.01
566 Tuition To Institutions of Higher Education and Technical Institutes	179,438.96
567 Tuition To Approved Private Schools (APS) and PA Chartered Schools for the Deaf and Blind	406.13
568 Tuition To Private Residential Rehabilitative Institutions (PRRI) [In-State] and Detention Centers	12,216.86
569 Tuition – Other	352,787.00
580 Travel	1,894.03
Total Other Purchased Services	\$3,629,291.14
600 Supplies	
610 General Supplies	197,889.73
630 Food	898.17
640 Books and Periodicals	13,123.18
650 Supplies & Fees – Technology Related	68,014.59
Total Supplies	\$279,925.67
700 Property	
752 Capital Equipment – Original and Additional	142,316.00
Total Property	\$142,316.00
800 Other Objects	
810 Dues and Fees	1,139.16

General Fund (10)

1000 Instruction	<u>Total</u>
Total Other Objects	\$1,139.16
Total 1000 Instruction	\$20,460,098.73

General Fund (10)

1100 Regular Programs – Elementary / Secondary

	<u>Elementary</u>	<u>Secondary</u>	<u>Federal</u>	<u>Total</u>
100 Personnel Services – Salaries				
100 Personnel Services – Salaries	3,359,767.64	3,292,525.02	592,947.85	7,245,240.51
Total Personnel Services – Salaries	\$3,359,767.64	\$3,292,525.02	\$592,947.85	\$7,245,240.51
200 Personnel Services – Employee Benefits				
210 Group Insurance – Contracted Provider	694,633.80	654,538.66	42,479.71	1,391,652.17
220 Social Security Contributions	256,906.11	251,333.86	44,611.88	552,851.85
230 PSERS Retirement Contributions	1,156,519.32	1,139,213.29	199,734.11	2,495,466.72
250 Unemployment Compensation	354.90	354.90	243.60	953.40
260 Workers' Compensation	6,848.84	6,505.86	3,700.75	17,055.45
Total Personnel Services – Employee Benefits	\$2,115,262.97	\$2,051,946.57	\$290,770.05	\$4,457,979.59
300 Purchased Professional and Technical Services				
322 Professional Educational Services – lus		26,180.00	97,091.00	123,271.00
329 Professional Educational Services – Other	750.00	750.00		1,500.00
Total Purchased Professional and Technical Services	\$750.00	\$26,930.00	\$97,091.00	\$124,771.00
400 Purchased Property Services				
430 Repairs and Maintenance Services	27,559.20	28,925.00		56,484.20
440 Rentals			7,218.28	7,218.28
Total Purchased Property Services	\$27,559.20	\$28,925.00	\$7,218.28	\$63,702.48
500 Other Purchased Services				
510 Student Transportation Services	2,243.19	5,589.46		7,832.65
562 Tuition To Pennsylvania Charter Schools	498,961.65	540,626.58		1,039,588.23
569 Tuition – Other		47,492.52		47,492.52
580 Travel	1,440.20	453.83		1,894.03
Total Other Purchased Services	\$502,645.04	\$594,162.39		\$1,096,807.43
600 Supplies				
610 General Supplies	32,652.38	51,584.55	89,135.28	173,372.21
630 Food	107.04	107.04	420.44	634.52
640 Books and Periodicals	7,615.75	2,649.49	1,426.99	11,692.23
650 Supplies & Fees – Technology Related	10,356.80	12,274.79	45,383.00	68,014.59
Total Supplies	\$50,731.97	\$66,615.87	\$136,365.71	\$253,713.55
700 Property				
752 Capital Equipment – Original and Additional		142,316.00		142,316.00
Total Property		\$142,316.00		\$142,316.00
800 Other Objects				
810 Dues and Fees	220.50	750.66		971.16
Total Other Objects	\$220.50	\$750.66		\$971.16
Total 1100 Regular Programs – Elementary / Secondary	\$6,056,937.32	\$6,204,171.51	\$1,124,392.89	\$13,385,501.72

General Fund (10)

1110 Regular Programs

	<u>Elementary</u>	<u>Secondary</u>	<u>Federal</u>	<u>Total</u>
100 Personnel Services – Salaries				
100 Personnel Services – Salaries	3,359,767.64	3,292,525.02	288,458.33	6,940,750.99
Total Personnel Services – Salaries	\$3,359,767.64	\$3,292,525.02	\$288,458.33	\$6,940,750.99
200 Personnel Services – Employee Benefits				
210 Group Insurance – Contracted Provider	694,633.80	654,538.66	8,166.75	1,357,339.21
220 Social Security Contributions	256,906.11	251,333.86	22,024.95	530,264.92
230 PSERS Retirement Contributions	1,156,519.32	1,139,213.29	96,540.34	2,392,272.95
250 Unemployment Compensation	354.90	354.90	243.60	953.40
260 Workers' Compensation	6,848.84	6,505.86	1,817.43	15,172.13
Total Personnel Services – Employee Benefits	\$2,115,262.97	\$2,051,946.57	\$128,793.07	\$4,296,002.61
300 Purchased Professional and Technical Services				
322 Professional Educational Services – lus		26,180.00	97,091.00	123,271.00
329 Professional Educational Services – Other	750.00	750.00		1,500.00
Total Purchased Professional and Technical Services	\$750.00	\$26,930.00	\$97,091.00	\$124,771.00
400 Purchased Property Services				
430 Repairs and Maintenance Services	27,559.20	28,925.00		56,484.20
440 Rentals			7,218.28	7,218.28
Total Purchased Property Services	\$27,559.20	\$28,925.00	\$7,218.28	\$63,702.48
500 Other Purchased Services				
510 Student Transportation Services	2,243.19	5,589.46		7,832.65
562 Tuition To Pennsylvania Charter Schools	498,961.65	540,626.58		1,039,588.23
569 Tuition – Other		47,492.52		47,492.52
580 Travel	1,440.20	453.83		1,894.03
Total Other Purchased Services	\$502,645.04	\$594,162.39		\$1,096,807.43
600 Supplies				
610 General Supplies	32,652.38	51,584.55	84,902.25	169,139.18
630 Food	107.04	107.04	130.44	344.52
640 Books and Periodicals	7,615.75	2,649.49	1,426.99	11,692.23
650 Supplies & Fees – Technology Related	10,356.80	12,274.79	39,262.75	61,894.34
Total Supplies	\$50,731.97	\$66,615.87	\$125,722.43	\$243,070.27
700 Property				
752 Capital Equipment – Original and Additional		142,316.00		142,316.00
Total Property		\$142,316.00		\$142,316.00
800 Other Objects				
810 Dues and Fees	220.50	750.66		971.16
Total Other Objects	\$220.50	\$750.66		\$971.16
Total 1110 Regular Programs	\$6,056,937.32	\$6,204,171.51	\$647,283.11	\$12,908,391.94

LEA : 121394503 Northern Lehigh SD

Printed 11/30/2022 8:37:22 PM

General Fund (10)

1190 Federally-Funded Regular Programs

	<u>Elementary</u>	<u>Secondary</u>	<u>Federal</u>	<u>Total</u>
100 Personnel Services – Salaries				
100 Personnel Services – Salaries			304,489.52	304,489.52
Total Personnel Services – Salaries			\$304,489.52	\$304,489.52
200 Personnel Services – Employee Benefits				
210 Group Insurance – Contracted Provider			34,312.96	34,312.96
220 Social Security Contributions			22,586.93	22,586.93
230 PSERS Retirement Contributions			103,193.77	103,193.77
260 Workers' Compensation			1,883.32	1,883.32
Total Personnel Services – Employee Benefits			\$161,976.98	\$161,976.98
600 Supplies				
610 General Supplies			4,233.03	4,233.03
630 Food			290.00	290.00
650 Supplies & Fees – Technology Related			6,120.25	6,120.25
Total Supplies			\$10,643.28	\$10,643.28
Total 1190 Federally-Funded Regular Programs			\$477,109.78	\$477,109.78

General Fund (10)

1200 Special Programs – Elementary / Secondary	<u>Elementary</u>	<u>Secondary</u>	<u>Federal</u>	<u>Total</u>
100 Personnel Services – Salaries				
100 Personnel Services – Salaries	986,379.11	702,649.34	198,107.07	1,887,135.52
Total Personnel Services – Salaries	\$986,379.11	\$702,649.34	\$198,107.07	\$1,887,135.52
200 Personnel Services – Employee Benefits				
210 Group Insurance – Contracted Provider	163,805.46	129,551.34	45,214.03	338,570.83
220 Social Security Contributions	74,975.52	54,241.53	14,924.82	144,141.87
230 PSERS Retirement Contributions	340,034.53	236,863.51	69,217.14	646,115.18
260 Workers' Compensation	6,253.92	4,379.91	1,248.09	11,881.92
Total Personnel Services – Employee Benefits	\$585,069.43	\$425,036.29	\$130,604.08	\$1,140,709.80
300 Purchased Professional and Technical Services				
322 Professional Educational Services – Ius	617,637.45	494,521.69	4,673.00	1,116,832.14
329 Professional Educational Services – Other	271,827.92	75,936.13		347,764.05
330 Other Professional Services	552.00	4,205.82		4,757.82
Total Purchased Professional and Technical Services	\$890,017.37	\$574,663.64	\$4,673.00	\$1,469,354.01
500 Other Purchased Services				
510 Student Transportation Services		110.82		110.82
561 Tuition To Other School Districts Within the State	19,732.43	58,714.19		78,446.62
562 Tuition To Pennsylvania Charter Schools	293,962.45	414,195.13		708,157.58
567 Tuition To Approved Private Schools (APS) and PA Chartered Schools for the Deaf and Blind		406.13		406.13
568 Tuition To Private Residential Rehabilitative Institutions (PRRI) [In-State] and Detention Centers	154.37	12,062.49		12,216.86
569 Tuition – Other	38,997.41	266,297.07		305,294.48
Total Other Purchased Services	\$352,846.66	\$751,785.83		\$1,104,632.49
600 Supplies				
610 General Supplies	6,004.92	17,605.60	308.00	23,918.52
630 Food	41.76	221.89		263.65
640 Books and Periodicals		1,430.95		1,430.95
Total Supplies	\$6,046.68	\$19,258.44	\$308.00	\$25,613.12
800 Other Objects				
810 Dues and Fees	126.00	42.00		168.00
Total Other Objects	\$126.00	\$42.00		\$168.00
Total 1200 Special Programs – Elementary / Secondary	\$2,820,485.25	\$2,473,435.54	\$333,692.15	\$5,627,612.94

General Fund (10)

1210 Life Skills Support

	<u>Elementary</u>	<u>Secondary</u>	<u>Federal</u>	<u>Total</u>
100 Personnel Services – Salaries				
100 Personnel Services – Salaries	153,448.43	116,413.43	61,975.00	331,836.86
Total Personnel Services – Salaries	\$153,448.43	\$116,413.43	\$61,975.00	\$331,836.86
200 Personnel Services – Employee Benefits				
210 Group Insurance – Contracted Provider	10,119.92	24,662.63	8,142.38	42,924.93
220 Social Security Contributions	11,750.01	8,906.71	4,741.09	25,397.81
230 PSERS Retirement Contributions	53,601.35	40,674.84	21,654.05	115,930.24
260 Workers' Compensation	981.69	741.05	390.51	2,113.25
Total Personnel Services – Employee Benefits	\$76,452.97	\$74,985.23	\$34,928.03	\$186,366.23
500 Other Purchased Services				
561 Tuition To Other School Districts Within the State	14,406.91	27,200.00		41,606.91
Total Other Purchased Services	\$14,406.91	\$27,200.00		\$41,606.91
600 Supplies				
610 General Supplies	198.65	551.62		750.27
630 Food	41.76	221.89		263.65
Total Supplies	\$240.41	\$773.51		\$1,013.92
Total 1210 Life Skills Support	\$244,548.72	\$219,372.17	\$96,903.03	\$560,823.92

General Fund (10)

1220 Sensory Support

300 Purchased Professional and Technical Services

329 Professional Educational Services – Other

Elementary

Secondary

Federal

Total

146,761.23

51,961.50

198,722.73

Total Purchased Professional and Technical Services

\$146,761.23

\$51,961.50

\$198,722.73

600 Supplies

610 General Supplies

50.00

50.00

Total Supplies

\$50.00

\$50.00

Total 1220 Sensory Support

\$146,811.23

\$51,961.50

\$198,772.73

General Fund (10)

1230 Emotional Support

	<u>Elementary</u>	<u>Secondary</u>	<u>Federal</u>	<u>Total</u>
100 Personnel Services – Salaries				
100 Personnel Services – Salaries	251,826.30	247,856.15	1,016.67	500,699.12
Total Personnel Services – Salaries	\$251,826.30	\$247,856.15	\$1,016.67	\$500,699.12
200 Personnel Services – Employee Benefits				
210 Group Insurance – Contracted Provider	42,545.88	57,264.44		99,810.32
220 Social Security Contributions	18,916.88	18,952.49	75.03	37,944.40
230 PSERS Retirement Contributions	87,989.33	86,600.89	353.92	174,944.14
260 Workers' Compensation	1,605.81	1,582.77	6.38	3,194.96
Total Personnel Services – Employee Benefits	\$151,057.90	\$164,400.59	\$435.33	\$315,893.82
300 Purchased Professional and Technical Services				
329 Professional Educational Services – Other	32,987.64	8,448.18		41,435.82
Total Purchased Professional and Technical Services	\$32,987.64	\$8,448.18		\$41,435.82
500 Other Purchased Services				
561 Tuition To Other School Districts Within the State	4,146.26			4,146.26
Total Other Purchased Services	\$4,146.26			\$4,146.26
600 Supplies				
610 General Supplies	462.21	506.23		968.44
640 Books and Periodicals		19.44		19.44
Total Supplies	\$462.21	\$525.67		\$987.88
800 Other Objects				
810 Dues and Fees	84.00			84.00
Total Other Objects	\$84.00			\$84.00
Total 1230 Emotional Support	\$440,564.31	\$421,230.59	\$1,452.00	\$863,246.90

General Fund (10)

1240 Academic Support

	<u>Elementary</u>	<u>Secondary</u>	<u>Federal</u>	<u>Total</u>
100 Personnel Services – Salaries				
100 Personnel Services – Salaries	463,157.99	338,379.76	117,070.11	918,607.86
Total Personnel Services – Salaries	\$463,157.99	\$338,379.76	\$117,070.11	\$918,607.86
200 Personnel Services – Employee Benefits				
210 Group Insurance – Contracted Provider	87,388.77	47,624.27	37,071.65	172,084.69
220 Social Security Contributions	35,258.22	26,382.33	8,729.56	70,370.11
230 PSERS Retirement Contributions	158,269.09	109,587.78	40,904.16	308,761.03
260 Workers' Compensation	2,914.80	2,056.09	737.49	5,708.38
Total Personnel Services – Employee Benefits	\$283,830.88	\$185,650.47	\$87,442.86	\$556,924.21
300 Purchased Professional and Technical Services				
322 Professional Educational Services – Ius			4,673.00	4,673.00
330 Other Professional Services	552.00	4,205.82		4,757.82
Total Purchased Professional and Technical Services	\$552.00	\$4,205.82	\$4,673.00	\$9,430.82
500 Other Purchased Services				
510 Student Transportation Services		110.82		110.82
561 Tuition To Other School Districts Within the State		31,035.70		31,035.70
562 Tuition To Pennsylvania Charter Schools	293,962.45	414,195.13		708,157.58
569 Tuition – Other	202.50	202.50		405.00
Total Other Purchased Services	\$294,164.95	\$445,544.15		\$739,709.10
600 Supplies				
610 General Supplies	5,294.06	16,547.75	308.00	22,149.81
640 Books and Periodicals		1,411.51		1,411.51
Total Supplies	\$5,294.06	\$17,959.26	\$308.00	\$23,561.32
800 Other Objects				
810 Dues and Fees	42.00	42.00		84.00
Total Other Objects	\$42.00	\$42.00		\$84.00
Total 1240 Academic Support	\$1,047,041.88	\$991,781.46	\$209,493.97	\$2,248,317.31

General Fund (10)

	<u>Elementary</u>	<u>Secondary</u>	<u>Federal</u>	<u>Total</u>
1241 Learning Support – Public				
100 Personnel Services – Salaries				
100 Personnel Services – Salaries	411,537.65	333,711.03	117,070.11	862,318.79
Total Personnel Services – Salaries	\$411,537.65	\$333,711.03	\$117,070.11	\$862,318.79
200 Personnel Services – Employee Benefits				
210 Group Insurance – Contracted Provider	86,985.89	45,011.76	37,071.65	169,069.30
220 Social Security Contributions	31,302.01	26,025.42	8,729.56	66,056.99
230 PSERS Retirement Contributions	141,268.66	107,956.53	40,904.16	290,129.35
260 Workers' Compensation	2,589.50	2,026.68	737.49	5,353.67
Total Personnel Services – Employee Benefits	\$262,146.06	\$181,020.39	\$87,442.86	\$530,609.31
300 Purchased Professional and Technical Services				
322 Professional Educational Services – Ius			4,673.00	4,673.00
330 Other Professional Services	552.00	4,205.82		4,757.82
Total Purchased Professional and Technical Services	\$552.00	\$4,205.82	\$4,673.00	\$9,430.82
500 Other Purchased Services				
510 Student Transportation Services		110.82		110.82
561 Tuition To Other School Districts Within the State		31,035.70		31,035.70
562 Tuition To Pennsylvania Charter Schools	293,962.45	414,195.13		708,157.58
569 Tuition – Other	202.50	202.50		405.00
Total Other Purchased Services	\$294,164.95	\$445,544.15		\$739,709.10
600 Supplies				
610 General Supplies	5,294.06	16,519.85	308.00	22,121.91
640 Books and Periodicals		1,411.51		1,411.51
Total Supplies	\$5,294.06	\$17,931.36	\$308.00	\$23,533.42
800 Other Objects				
810 Dues and Fees	42.00	42.00		84.00
Total Other Objects	\$42.00	\$42.00		\$84.00
Total 1241 Learning Support – Public	\$973,736.72	\$982,454.75	\$209,493.97	\$2,165,685.44

General Fund (10)

1243 Gifted Support

	<u>Elementary</u>	<u>Secondary</u>	<u>Federal</u>	<u>Total</u>
100 Personnel Services – Salaries				
100 Personnel Services – Salaries	51,620.34	4,668.73		56,289.07
Total Personnel Services – Salaries	\$51,620.34	\$4,668.73		\$56,289.07
200 Personnel Services – Employee Benefits				
210 Group Insurance – Contracted Provider	402.88	2,612.51		3,015.39
220 Social Security Contributions	3,956.21	356.91		4,313.12
230 PSERS Retirement Contributions	17,000.43	1,631.25		18,631.68
260 Workers' Compensation	325.30	29.41		354.71
Total Personnel Services – Employee Benefits	\$21,684.82	\$4,630.08		\$26,314.90
600 Supplies				
610 General Supplies		27.90		27.90
Total Supplies		\$27.90		\$27.90
Total 1243 Gifted Support	\$73,305.16	\$9,326.71		\$82,631.87

General Fund (10)

1260 Physical Support

300 Purchased Professional and Technical Services

329 Professional Educational Services – Other

Total Purchased Professional and Technical Services

Total 1260 Physical Support

	<u>Elementary</u>	<u>Secondary</u>	<u>Federal</u>	<u>Total</u>
	92,079.05	15,526.45		107,605.50
	\$92,079.05	\$15,526.45		\$107,605.50
	\$92,079.05	\$15,526.45		\$107,605.50

LEA : 121394503 Northern Lehigh SD

Printed 11/30/2022 8:37:22 PM

General Fund (10)

1270 Multi-Handicapped Support

500 Other Purchased Services

561 Tuition To Other School Districts Within the State

Total Other Purchased Services

Total 1270 Multi-Handicapped Support

	<u>Elementary</u>	<u>Secondary</u>	<u>Federal</u>	<u>Total</u>
561 Tuition To Other School Districts Within the State	1,179.26	478.49		1,657.75
Total Other Purchased Services	\$1,179.26	\$478.49		\$1,657.75
Total 1270 Multi-Handicapped Support	\$1,179.26	\$478.49		\$1,657.75

General Fund (10)

1280 Early Intervention Support

100 Personnel Services – Salaries

	<u>Elementary</u>	<u>Secondary</u>	<u>Federal</u>	<u>Total</u>
100 Personnel Services – Salaries	117,946.39			117,946.39
Total Personnel Services – Salaries	\$117,946.39			\$117,946.39

200 Personnel Services – Employee Benefits

210 Group Insurance – Contracted Provider	23,750.89			23,750.89
220 Social Security Contributions	9,050.41			9,050.41
230 PSERS Retirement Contributions	40,174.76			40,174.76
260 Workers' Compensation	751.62			751.62
Total Personnel Services – Employee Benefits	\$73,727.68			\$73,727.68
Total 1280 Early Intervention Support	\$191,674.07			\$191,674.07

General Fund (10)

	<u>Elementary</u>	<u>Secondary</u>	<u>Federal</u>	<u>Total</u>
1290 Special Programs - Other Support				
100 Personnel Services – Salaries				
100 Personnel Services – Salaries			18,045.29	18,045.29
Total Personnel Services – Salaries			\$18,045.29	\$18,045.29
200 Personnel Services – Employee Benefits				
220 Social Security Contributions			1,379.14	1,379.14
230 PSERS Retirement Contributions			6,305.01	6,305.01
260 Workers’ Compensation			113.71	113.71
Total Personnel Services – Employee Benefits			\$7,797.86	\$7,797.86
300 Purchased Professional and Technical Services				
322 Professional Educational Services – Ius	617,637.45	494,521.69		1,112,159.14
Total Purchased Professional and Technical Services	\$617,637.45	\$494,521.69		\$1,112,159.14
500 Other Purchased Services				
567 Tuition To Approved Private Schools (APS) and PA Chartered Schools for the Deaf and Blind		406.13		406.13
568 Tuition To Private Residential Rehabilitative Institutions (PRRI) [In-State] and Detention Centers	154.37	12,062.49		12,216.86
569 Tuition – Other	38,794.91	266,094.57		304,889.48
Total Other Purchased Services	\$38,949.28	\$278,563.19		\$317,512.47
Total 1290 Special Programs - Other Support	\$656,586.73	\$773,084.88	\$25,843.15	\$1,455,514.76

LEA : 121394503 Northern Lehigh SD

Printed 11/30/2022 8:37:22 PM

General Fund (10)

1300 Vocational Education

Elementary

Secondary

Federal

Total

500 Other Purchased Services

564 Tuition To Career and Technology Centers

1,227,844.01

1,227,844.01

Total Other Purchased Services

\$1,227,844.01

\$1,227,844.01

Total 1300 Vocational Education

\$1,227,844.01

\$1,227,844.01

General Fund (10)

	<u>Elementary</u>	<u>Secondary</u>	<u>Federal</u>	<u>Total</u>
1400 Other Instructional Programs – Elementary / Secondary				
100 Personnel Services – Salaries				
100 Personnel Services – Salaries			9,317.22	9,317.22
Total Personnel Services – Salaries			\$9,317.22	\$9,317.22
200 Personnel Services – Employee Benefits				
220 Social Security Contributions			707.39	707.39
230 PSERS Retirement Contributions			3,192.39	3,192.39
260 Workers' Compensation			58.85	58.85
Total Personnel Services – Employee Benefits			\$3,958.63	\$3,958.63
300 Purchased Professional and Technical Services				
329 Professional Educational Services – Other		800.00		800.00
Total Purchased Professional and Technical Services		\$800.00		\$800.00
500 Other Purchased Services				
561 Tuition To Other School Districts Within the State		20,568.25		20,568.25
Total Other Purchased Services		\$20,568.25		\$20,568.25
Total 1400 Other Instructional Programs – Elementary / Secondary		\$21,368.25	\$13,275.85	\$34,644.10

General Fund (10)

1420 Summer School

100 Personnel Services – Salaries

	<u>Elementary</u>	<u>Secondary</u>	<u>Federal</u>	<u>Total</u>
100 Personnel Services – Salaries			3,515.45	3,515.45
Total Personnel Services – Salaries			\$3,515.45	\$3,515.45

200 Personnel Services – Employee Benefits

220 Social Security Contributions			265.47	265.47
230 PSERS Retirement Contributions			1,165.39	1,165.39
260 Workers' Compensation			22.11	22.11
Total Personnel Services – Employee Benefits			\$1,452.97	\$1,452.97

Total 1420 Summer School

			\$4,968.42	\$4,968.42
--	--	--	-------------------	-------------------

LEA : 121394503 Northern Lehigh SD

Printed 11/30/2022 8:37:22 PM

General Fund (10)

1430 Homebound Instruction

300 Purchased Professional and Technical Services

329 Professional Educational Services – Other

Total Purchased Professional and Technical Services

Total 1430 Homebound Instruction

Elementary

Secondary

Federal

Total

800.00

800.00

\$800.00

\$800.00

\$800.00

\$800.00

LEA : 121394503 Northern Lehigh SD

Printed 11/30/2022 8:37:22 PM

General Fund (10)

1440 Alternative Regular Education Programs

Elementary

Secondary

Federal

Total

500 Other Purchased Services

561 Tuition To Other School Districts Within the State

20,568.25

20,568.25

Total Other Purchased Services

\$20,568.25

\$20,568.25

Total 1440 Alternative Regular Education Programs

\$20,568.25

\$20,568.25

LEA : 121394503 Northern Lehigh SD

Printed 11/30/2022 8:37:22 PM

General Fund (10)

1441 Adjudicated / Court-Placed Programs

Elementary

Secondary

Federal

Total

500 Other Purchased Services

561 Tuition To Other School Districts Within the State

20,568.25

20,568.25

Total Other Purchased Services

\$20,568.25

\$20,568.25

Total 1441 Adjudicated / Court-Placed Programs

\$20,568.25

\$20,568.25

General Fund (10)

	<u>Elementary</u>	<u>Secondary</u>	<u>Federal</u>	<u>Total</u>
1450 Instructional Programs Outside the Established School Day				
100 Personnel Services – Salaries				
100 Personnel Services – Salaries			5,801.77	5,801.77
Total Personnel Services – Salaries			\$5,801.77	\$5,801.77
200 Personnel Services – Employee Benefits				
220 Social Security Contributions			441.92	441.92
230 PSERS Retirement Contributions			2,027.00	2,027.00
260 Workers' Compensation			36.74	36.74
Total Personnel Services – Employee Benefits			\$2,505.66	\$2,505.66
Total 1450 Instructional Programs Outside the Established School Day			\$8,307.43	\$8,307.43

General Fund (10)

1500 Nonpublic School Programs

Elementary

Secondary

Federal

Total

300 Purchased Professional and Technical Services

322 Professional Educational Services – lus

4,458.00

4,458.00

Total Purchased Professional and Technical Services

\$4,458.00

\$4,458.00

600 Supplies

610 General Supplies

599.00

599.00

Total Supplies

\$599.00

\$599.00

Total 1500 Nonpublic School Programs

\$5,057.00

\$5,057.00

General Fund (10)

1600 Adult Education Programs

Elementary

Secondary

Federal

Total

500 Other Purchased Services

566 Tuition To Institutions of Higher Education and Technical Institutes

174,533.96

Total Other Purchased Services

\$174,533.96

Total 1600 Adult Education Programs

\$174,533.96

General Fund (10)

1700 Higher Education Programs for Secondary Students

Elementary

Secondary

Federal

Total

500 Other Purchased Services

566 Tuition To Institutions of Higher Education and Technical Institutes

4,905.00

Total Other Purchased Services

\$4,905.00

Total 1700 Higher Education Programs for Secondary Students

\$4,905.00

General Fund (10)

2000 Support Services

Total

100 Personnel Services – Salaries

100 Personnel Services – Salaries 4,774,920.20

Total Personnel Services – Salaries \$4,774,920.20

200 Personnel Services – Employee Benefits

210 Group Insurance – Contracted Provider 997,218.77

220 Social Security Contributions 357,703.85

230 PSERS Retirement Contributions 1,579,855.28

240 Tuition Reimbursement 85,170.00

260 Workers' Compensation 29,116.68

291 Other Retirement Plans 2,000.00

299 All Other Employee Benefits 547.70

Total Personnel Services – Employee Benefits \$3,051,612.28

300 Purchased Professional and Technical Services

310 Official / Administrative Services 26,955.11

322 Professional Educational Services – Ius 5,257.54

329 Professional Educational Services – Other 34,541.43

330 Other Professional Services 162,465.81

360 Employee Training and Development Services 73,188.01

390 Other Purchased Professional and Technical Services 235,248.43

Total Purchased Professional and Technical Services \$537,656.33

400 Purchased Property Services

410 Cleaning Services 27,263.32

420 Utility Services 28,236.70

430 Repairs and Maintenance Services 73,123.85

440 Rentals 2,857.62

460 Extermination Services 3,000.00

490 Other Purchased Property Services 75.51

Total Purchased Property Services \$134,557.00

500 Other Purchased Services

510 Student Transportation Services 663.88

513 Contracted Carriers 1,798,320.29

516 Student Transportation Services From the IU 11,786.84

520 Insurance – General 33,774.00

521 Fire Insurance 49,844.30

522 Automotive Liability Insurance 11,210.55

523 General Property and Liability Insurance 38,938.00

529 Other Insurance 13,589.00

530 Communications 65,632.61

549 Other Advertising/Public Relations 9,670.23

550 Printing and Binding 13,083.36

580 Travel 4,442.81

595 IU Payments By Withholding 18,014.84

Total Other Purchased Services \$2,068,970.71

General Fund (10)

2000 Support Services

	<u>Total</u>
600 Supplies	
610 General Supplies	208,594.12
620 Energy	364,305.65
630 Food	3,505.70
640 Books and Periodicals	18,346.70
650 Supplies & Fees – Technology Related	207,977.08
Total Supplies	\$802,729.25
700 Property	
752 Capital Equipment – Original and Additional	55,037.60
762 Capitalized Equipment - Replacement	205,478.26
Total Property	\$260,515.86
800 Other Objects	
810 Dues and Fees	21,399.33
890 Miscellaneous Expenditures	5,375.00
Total Other Objects	\$26,774.33
Total 2000 Support Services	\$11,657,735.96

General Fund (10)

	<u>Elementary</u>	<u>Secondary</u>	<u>Federal</u>	<u>Total</u>
2100 Support Services – Students				
100 Personnel Services – Salaries				
100 Personnel Services – Salaries	258,010.28	355,580.75	6,770.00	620,361.03
Total Personnel Services – Salaries	\$258,010.28	\$355,580.75	\$6,770.00	\$620,361.03
200 Personnel Services – Employee Benefits				
210 Group Insurance – Contracted Provider	73,123.30	71,185.60		144,308.90
220 Social Security Contributions	19,831.19	27,617.54	505.60	47,954.33
230 PSERS Retirement Contributions	91,406.71	124,516.69	2,365.44	218,288.84
260 Workers' Compensation	1,673.52	2,349.86	42.66	4,066.04
Total Personnel Services – Employee Benefits	\$186,034.72	\$225,669.69	\$2,913.70	\$414,618.11
300 Purchased Professional and Technical Services				
329 Professional Educational Services – Other			26,591.43	26,591.43
330 Other Professional Services	1,271.56	1,271.56		2,543.12
Total Purchased Professional and Technical Services	\$1,271.56	\$1,271.56	\$26,591.43	\$29,134.55
400 Purchased Property Services				
430 Repairs and Maintenance Services	528.19	1,347.33		1,875.52
Total Purchased Property Services	\$528.19	\$1,347.33		\$1,875.52
500 Other Purchased Services				
510 Student Transportation Services		663.88		663.88
580 Travel	113.86	82.26		196.12
Total Other Purchased Services	\$113.86	\$746.14		\$860.00
600 Supplies				
610 General Supplies	1,499.74	2,221.27		3,721.01
650 Supplies & Fees – Technology Related	13,578.76	13,233.76		26,812.52
Total Supplies	\$15,078.50	\$15,455.03		\$30,533.53
800 Other Objects				
810 Dues and Fees	42.00	129.00		171.00
Total Other Objects	\$42.00	\$129.00		\$171.00
Total 2100 Support Services – Students	\$461,079.11	\$600,199.50	\$36,275.13	\$1,097,553.74

General Fund (10)

	<u>Elementary</u>	<u>Secondary</u>	<u>Federal</u>	<u>Total</u>
2120 Guidance Services				
100 Personnel Services – Salaries				
100 Personnel Services – Salaries	177,275.00	274,996.18	6,770.00	459,041.18
Total Personnel Services – Salaries	\$177,275.00	\$274,996.18	\$6,770.00	\$459,041.18
200 Personnel Services – Employee Benefits				
210 Group Insurance – Contracted Provider	50,106.78	46,574.85		96,681.63
220 Social Security Contributions	13,462.25	21,248.70	505.60	35,216.55
230 PSERS Retirement Contributions	61,939.84	95,049.85	2,365.44	159,355.13
260 Workers' Compensation	1,138.66	1,815.00	42.66	2,996.32
Total Personnel Services – Employee Benefits	\$126,647.53	\$164,688.40	\$2,913.70	\$294,249.63
400 Purchased Property Services				
430 Repairs and Maintenance Services		823.67		823.67
Total Purchased Property Services		\$823.67		\$823.67
500 Other Purchased Services				
510 Student Transportation Services		663.88		663.88
Total Other Purchased Services		\$663.88		\$663.88
600 Supplies				
610 General Supplies	345.13	332.58		677.71
650 Supplies & Fees – Technology Related	13,342.95	12,997.95		26,340.90
Total Supplies	\$13,688.08	\$13,330.53		\$27,018.61
800 Other Objects				
810 Dues and Fees	42.00	129.00		171.00
Total Other Objects	\$42.00	\$129.00		\$171.00
Total 2120 Guidance Services	\$317,652.61	\$454,631.66	\$9,683.70	\$781,967.97

General Fund (10)

	<u>Elementary</u>	<u>Secondary</u>	<u>Federal</u>	<u>Total</u>
2140 Psychological Services				
100 Personnel Services – Salaries				
100 Personnel Services – Salaries	80,735.28	80,584.57		161,319.85
Total Personnel Services – Salaries	\$80,735.28	\$80,584.57		\$161,319.85
200 Personnel Services – Employee Benefits				
210 Group Insurance – Contracted Provider	23,016.52	24,610.75		47,627.27
220 Social Security Contributions	6,368.94	6,368.84		12,737.78
230 PSERS Retirement Contributions	29,466.87	29,466.84		58,933.71
260 Workers' Compensation	534.86	534.86		1,069.72
Total Personnel Services – Employee Benefits	\$59,387.19	\$60,981.29		\$120,368.48
300 Purchased Professional and Technical Services				
330 Other Professional Services	1,271.56	1,271.56		2,543.12
Total Purchased Professional and Technical Services	\$1,271.56	\$1,271.56		\$2,543.12
400 Purchased Property Services				
430 Repairs and Maintenance Services	528.19	523.66		1,051.85
Total Purchased Property Services	\$528.19	\$523.66		\$1,051.85
500 Other Purchased Services				
580 Travel	113.86	82.26		196.12
Total Other Purchased Services	\$113.86	\$82.26		\$196.12
600 Supplies				
610 General Supplies	1,154.61	1,888.69		3,043.30
650 Supplies & Fees – Technology Related	235.81	235.81		471.62
Total Supplies	\$1,390.42	\$2,124.50		\$3,514.92
Total 2140 Psychological Services	\$143,426.50	\$145,567.84		\$288,994.34

General Fund (10)

2160 Social Work Services

300 Purchased Professional and Technical Services

329 Professional Educational Services – Other

Total Purchased Professional and Technical Services

Total 2160 Social Work Services

Elementary

Secondary

Federal

Total

26,591.43

26,591.43

\$26,591.43

\$26,591.43

\$26,591.43

\$26,591.43

General Fund (10)

2200 Support Services – Instructional Staff

	<u>Elementary</u>	<u>Secondary</u>	<u>Federal</u>	<u>Total</u>
100 Personnel Services – Salaries				
100 Personnel Services – Salaries	232,218.29	238,867.44	138,029.02	609,114.75
Total Personnel Services – Salaries	\$232,218.29	\$238,867.44	\$138,029.02	\$609,114.75
200 Personnel Services – Employee Benefits				
210 Group Insurance – Contracted Provider	25,360.83	49,674.51	23,811.79	98,847.13
220 Social Security Contributions	17,708.19	18,176.82	10,427.44	46,312.45
230 PSERS Retirement Contributions	73,659.42	83,008.73	47,314.22	203,982.37
240 Tuition Reimbursement	11,184.00	19,320.00		30,504.00
260 Workers' Compensation	1,469.38	1,508.10	853.08	3,830.56
Total Personnel Services – Employee Benefits	\$129,381.82	\$171,688.16	\$82,406.53	\$383,476.51
300 Purchased Professional and Technical Services				
322 Professional Educational Services – lus	2,305.76	2,951.78		5,257.54
329 Professional Educational Services – Other			7,950.00	7,950.00
330 Other Professional Services	250.00	250.00	2,898.40	3,398.40
360 Employee Training and Development Services	8,696.41	8,830.57	5,580.00	23,106.98
390 Other Purchased Professional and Technical Services			39,780.00	39,780.00
Total Purchased Professional and Technical Services	\$11,252.17	\$12,032.35	\$56,208.40	\$79,492.92
400 Purchased Property Services				
430 Repairs and Maintenance Services	2,818.75	4,770.13		7,588.88
Total Purchased Property Services	\$2,818.75	\$4,770.13		\$7,588.88
500 Other Purchased Services				
530 Communications	233.00	283.00		516.00
580 Travel	801.40	612.06		1,413.46
Total Other Purchased Services	\$1,034.40	\$895.06		\$1,929.46
600 Supplies				
610 General Supplies	911.32	1,716.85		2,628.17
630 Food	7.08	32.93		40.01
640 Books and Periodicals	3,376.86	1,146.17	2,851.18	7,374.21
650 Supplies & Fees – Technology Related	12,479.70	20,213.70		32,693.40
Total Supplies	\$16,774.96	\$23,109.65	\$2,851.18	\$42,735.79
800 Other Objects				
810 Dues and Fees	190.00	190.00		380.00
Total Other Objects	\$190.00	\$190.00		\$380.00
Total 2200 Support Services – Instructional Staff	\$393,670.39	\$451,552.79	\$279,495.13	\$1,124,718.31

General Fund (10)

2220 Technology Support Services

100 Personnel Services – Salaries

	<u>Elementary</u>	<u>Secondary</u>	<u>Federal</u>	<u>Total</u>
100 Personnel Services – Salaries			129,113.65	129,113.65
Total Personnel Services – Salaries			\$129,113.65	\$129,113.65

200 Personnel Services – Employee Benefits

210 Group Insurance – Contracted Provider			23,811.79	23,811.79
220 Social Security Contributions	4.96	4.96	9,747.10	9,757.02
230 PSERS Retirement Contributions			44,199.17	44,199.17
260 Workers' Compensation			796.90	796.90
Total Personnel Services – Employee Benefits	\$4.96	\$4.96	\$78,554.96	\$78,564.88

600 Supplies

610 General Supplies	225.00			225.00
----------------------	--------	--	--	--------

Total Supplies	\$225.00			\$225.00
Total 2220 Technology Support Services	\$229.96	\$4.96	\$207,668.61	\$207,903.53

General Fund (10)

	<u>Elementary</u>	<u>Secondary</u>	<u>Federal</u>	<u>Total</u>
2250 School Library Services				
100 Personnel Services – Salaries				
100 Personnel Services – Salaries	109,172.53	74,829.99	3,400.00	187,402.52
Total Personnel Services – Salaries	\$109,172.53	\$74,829.99	\$3,400.00	\$187,402.52
200 Personnel Services – Employee Benefits				
210 Group Insurance – Contracted Provider	344.51	24,658.07		25,002.58
220 Social Security Contributions	8,362.24	5,696.97	258.41	14,317.62
230 PSERS Retirement Contributions	36,073.80	26,145.53	1,187.97	63,407.30
260 Workers' Compensation	698.52	478.84	21.42	1,198.78
Total Personnel Services – Employee Benefits	\$45,479.07	\$56,979.41	\$1,467.80	\$103,926.28
400 Purchased Property Services				
430 Repairs and Maintenance Services	2,209.32	4,133.59		6,342.91
Total Purchased Property Services	\$2,209.32	\$4,133.59		\$6,342.91
500 Other Purchased Services				
530 Communications		50.00		50.00
Total Other Purchased Services		\$50.00		\$50.00
600 Supplies				
610 General Supplies	402.50	610.93		1,013.43
640 Books and Periodicals	3,360.87	1,130.18	2,851.18	7,342.23
650 Supplies & Fees – Technology Related	2,452.00	11,093.24		13,545.24
Total Supplies	\$6,215.37	\$12,834.35	\$2,851.18	\$21,900.90
Total 2250 School Library Services	\$163,076.29	\$148,827.34	\$7,718.98	\$319,622.61

General Fund (10)

2260 Instruction and Curriculum Development Services

	<u>Elementary</u>	<u>Secondary</u>	<u>Federal</u>	<u>Total</u>
100 Personnel Services – Salaries				
100 Personnel Services – Salaries	103,246.71	103,841.82		207,088.53
Total Personnel Services – Salaries	\$103,246.71	\$103,841.82		\$207,088.53
200 Personnel Services – Employee Benefits				
210 Group Insurance – Contracted Provider	25,016.32	25,016.44		50,032.76
220 Social Security Contributions	7,829.86	7,873.36		15,703.22
230 PSERS Retirement Contributions	35,623.08	35,830.89		71,453.97
260 Workers' Compensation	646.10	649.84		1,295.94
Total Personnel Services – Employee Benefits	\$69,115.36	\$69,370.53		\$138,485.89
300 Purchased Professional and Technical Services				
322 Professional Educational Services – Ius	2,305.76	2,301.78		4,607.54
329 Professional Educational Services – Other			7,950.00	7,950.00
330 Other Professional Services	250.00	250.00	2,898.40	3,398.40
Total Purchased Professional and Technical Services	\$2,555.76	\$2,551.78	\$10,848.40	\$15,955.94
400 Purchased Property Services				
430 Repairs and Maintenance Services	609.43	636.54		1,245.97
Total Purchased Property Services	\$609.43	\$636.54		\$1,245.97
500 Other Purchased Services				
530 Communications	233.00	233.00		466.00
580 Travel	647.11	612.06		1,259.17
Total Other Purchased Services	\$880.11	\$845.06		\$1,725.17
600 Supplies				
610 General Supplies	283.82	1,105.92		1,389.74
630 Food	7.08	32.93		40.01
640 Books and Periodicals	15.99	15.99		31.98
650 Supplies & Fees – Technology Related	10,027.70	9,120.46		19,148.16
Total Supplies	\$10,334.59	\$10,275.30		\$20,609.89
800 Other Objects				
810 Dues and Fees	190.00	190.00		380.00
Total Other Objects	\$190.00	\$190.00		\$380.00
Total 2260 Instruction and Curriculum Development Services	\$186,931.96	\$187,711.03	\$10,848.40	\$385,491.39

General Fund (10)

2270 Instructional Staff Professional Development Services	<u>Elementary</u>	<u>Secondary</u>	<u>Federal</u>	<u>Total</u>
100 Personnel Services – Salaries				
100 Personnel Services – Salaries	4,167.63	4,200.00		8,367.63
Total Personnel Services – Salaries	\$4,167.63	\$4,200.00		\$8,367.63
200 Personnel Services – Employee Benefits				
220 Social Security Contributions	315.25	317.81		633.06
230 PSERS Retirement Contributions	1,456.12	1,467.48		2,923.60
240 Tuition Reimbursement	11,184.00	19,320.00		30,504.00
260 Workers' Compensation	26.29	26.46		52.75
Total Personnel Services – Employee Benefits	\$12,981.66	\$21,131.75		\$34,113.41
300 Purchased Professional and Technical Services				
322 Professional Educational Services – Ius		650.00		650.00
360 Employee Training and Development Services	8,696.41	8,830.57	5,580.00	23,106.98
390 Other Purchased Professional and Technical Services			39,780.00	39,780.00
Total Purchased Professional and Technical Services	\$8,696.41	\$9,480.57	\$45,360.00	\$63,536.98
500 Other Purchased Services				
580 Travel	154.29			154.29
Total Other Purchased Services	\$154.29			\$154.29
Total 2270 Instructional Staff Professional Development Services	\$25,999.99	\$34,812.32	\$45,360.00	\$106,172.31

General Fund (10)

	<u>Elementary</u>	<u>Secondary</u>	<u>Federal</u>	<u>Total</u>
2290 Other Instructional Staff Services				
100 Personnel Services – Salaries				
100 Personnel Services – Salaries	15,631.42	55,995.63	5,515.37	77,142.42
Total Personnel Services – Salaries	\$15,631.42	\$55,995.63	\$5,515.37	\$77,142.42
200 Personnel Services – Employee Benefits				
220 Social Security Contributions	1,195.88	4,283.72	421.93	5,901.53
230 PSERS Retirement Contributions	506.42	19,564.83	1,927.08	21,998.33
260 Workers' Compensation	98.47	352.96	34.76	486.19
Total Personnel Services – Employee Benefits	\$1,800.77	\$24,201.51	\$2,383.77	\$28,386.05
Total 2290 Other Instructional Staff Services	\$17,432.19	\$80,197.14	\$7,899.14	\$105,528.47

General Fund (10)

	<u>Elementary</u>	<u>Secondary</u>	<u>Federal</u>	<u>Total</u>
2300 Support Services – Administration				
100 Personnel Services – Salaries				
100 Personnel Services – Salaries	368,483.06	496,522.10		1,340,450.88
Total Personnel Services – Salaries	\$368,483.06	\$496,522.10		\$1,340,450.88
200 Personnel Services – Employee Benefits				
210 Group Insurance – Contracted Provider	54,151.43	127,042.23		238,048.27
220 Social Security Contributions	27,980.45	36,107.81		97,683.16
230 PSERS Retirement Contributions	121,327.53	164,135.09		428,248.52
260 Workers' Compensation	2,158.39	2,966.17		7,759.09
291 Other Retirement Plans				2,000.00
Total Personnel Services – Employee Benefits	\$205,617.80	\$330,251.30		\$773,739.04
300 Purchased Professional and Technical Services				
310 Official / Administrative Services				26,955.11
330 Other Professional Services				92,058.90
Total Purchased Professional and Technical Services				\$119,014.01
400 Purchased Property Services				
430 Repairs and Maintenance Services		993.00		5,120.56
Total Purchased Property Services		\$993.00		\$5,120.56
500 Other Purchased Services				
520 Insurance – General				33,774.00
530 Communications	2,474.50	4,386.50		13,180.82
549 Other Advertising/Public Relations				9,670.23
550 Printing and Binding				13,083.36
580 Travel				20.24
Total Other Purchased Services	\$2,474.50	\$4,386.50		\$69,728.65
600 Supplies				
610 General Supplies	1,726.77	4,058.38		23,368.34
630 Food		743.47		3,465.69
640 Books and Periodicals	184.10	62.40		5,385.09
650 Supplies & Fees – Technology Related	6,183.00	9,600.40	4,875.00	36,033.77
Total Supplies	\$8,093.87	\$14,464.65	\$4,875.00	\$68,252.89
800 Other Objects				
810 Dues and Fees	52.50	190.00		15,991.49
890 Miscellaneous Expenditures				5,375.00
Total Other Objects	\$52.50	\$190.00		\$21,366.49
Total 2300 Support Services – Administration	\$584,721.73	\$846,807.55	\$4,875.00	\$2,397,672.52

General Fund (10)

2310 Board Services

Elementary

Secondary

Federal

Total

300 Purchased Professional and Technical Services

330 Other Professional Services

1,315.00

Total Purchased Professional and Technical Services

\$1,315.00

500 Other Purchased Services

520 Insurance – General

31,175.00

549 Other Advertising/Public Relations

5,081.76

Total Other Purchased Services

\$36,256.76

600 Supplies

610 General Supplies

5,711.93

630 Food

831.01

640 Books and Periodicals

214.59

Total Supplies

\$6,757.53

800 Other Objects

810 Dues and Fees

8,487.93

890 Miscellaneous Expenditures

5,375.00

Total Other Objects

\$13,862.93

Total 2310 Board Services

\$58,192.22

General Fund (10)

2320 Board Treasurer Services

Elementary

Secondary

Federal

Total

500 Other Purchased Services

520 Insurance – General

269.00

Total Other Purchased Services

\$269.00

Total 2320 Board Treasurer Services

\$269.00

General Fund (10)

	<u>Elementary</u>	<u>Secondary</u>	<u>Federal</u>	<u>Total</u>
2330 Tax Assessment and Collection Services				
100 Personnel Services – Salaries				
100 Personnel Services – Salaries				24,958.17
Total Personnel Services – Salaries				\$24,958.17
200 Personnel Services – Employee Benefits				
220 Social Security Contributions				1,909.30
Total Personnel Services – Employee Benefits				\$1,909.30
300 Purchased Professional and Technical Services				
310 Official / Administrative Services				26,955.11
Total Purchased Professional and Technical Services				\$26,955.11
500 Other Purchased Services				
520 Insurance – General				2,330.00
530 Communications				6,319.82
550 Printing and Binding				13,083.36
Total Other Purchased Services				\$21,733.18
600 Supplies				
610 General Supplies				158.70
650 Supplies & Fees – Technology Related				5,727.63
Total Supplies				\$5,886.33
Total 2330 Tax Assessment and Collection Services				\$81,442.09

General Fund (10)

2350 Legal and Accounting Services

Elementary

Secondary

Federal

Total

300 Purchased Professional and Technical Services

330 Other Professional Services

90,263.90

Total Purchased Professional and Technical Services

\$90,263.90

Total 2350 Legal and Accounting Services

\$90,263.90

General Fund (10)

	<u>Elementary</u>	<u>Secondary</u>	<u>Federal</u>	<u>Total</u>
2360 Office of the Superintendent / Executive Director Services				
100 Personnel Services – Salaries				
100 Personnel Services – Salaries				447,987.55
Total Personnel Services – Salaries				\$447,987.55
200 Personnel Services – Employee Benefits				
210 Group Insurance – Contracted Provider				56,854.61
220 Social Security Contributions				31,494.35
230 PSERS Retirement Contributions				141,912.40
260 Workers' Compensation				2,618.78
291 Other Retirement Plans				2,000.00
Total Personnel Services – Employee Benefits				\$234,880.14
300 Purchased Professional and Technical Services				
330 Other Professional Services				480.00
Total Purchased Professional and Technical Services				\$480.00
400 Purchased Property Services				
430 Repairs and Maintenance Services				4,127.56
Total Purchased Property Services				\$4,127.56
500 Other Purchased Services				
530 Communications	552.50	552.50		1,105.00
549 Other Advertising/Public Relations				4,588.47
580 Travel				20.24
Total Other Purchased Services	\$552.50	\$552.50		\$5,713.71
600 Supplies				
610 General Supplies				9,073.28
630 Food				1,891.21
640 Books and Periodicals				4,924.00
650 Supplies & Fees – Technology Related			4,875.00	14,522.74
Total Supplies			\$4,875.00	\$30,411.23
800 Other Objects				
810 Dues and Fees				5,161.06
Total Other Objects				\$5,161.06
Total 2360 Office of the Superintendent / Executive Director Services	\$552.50	\$552.50	\$4,875.00	\$728,761.25

General Fund (10)

	<u>Elementary</u>	<u>Secondary</u>	<u>Federal</u>	<u>Total</u>
2370 Community Relations Services				
100 Personnel Services – Salaries				
100 Personnel Services – Salaries				2,500.00
Total Personnel Services – Salaries				\$2,500.00
200 Personnel Services – Employee Benefits				
220 Social Security Contributions				191.25
230 PSERS Retirement Contributions				873.50
260 Workers' Compensation				15.75
Total Personnel Services – Employee Benefits				\$1,080.50
Total 2370 Community Relations Services				\$3,580.50

General Fund (10)

	<u>Elementary</u>	<u>Secondary</u>	<u>Federal</u>	<u>Total</u>
2380 Office of the Principal Services				
100 Personnel Services – Salaries				
100 Personnel Services – Salaries	368,483.06	496,522.10		865,005.16
Total Personnel Services – Salaries	\$368,483.06	\$496,522.10		\$865,005.16
200 Personnel Services – Employee Benefits				
210 Group Insurance – Contracted Provider	54,151.43	127,042.23		181,193.66
220 Social Security Contributions	27,980.45	36,107.81		64,088.26
230 PSERS Retirement Contributions	121,327.53	164,135.09		285,462.62
260 Workers' Compensation	2,158.39	2,966.17		5,124.56
Total Personnel Services – Employee Benefits	\$205,617.80	\$330,251.30		\$535,869.10
400 Purchased Property Services				
430 Repairs and Maintenance Services		993.00		993.00
Total Purchased Property Services		\$993.00		\$993.00
500 Other Purchased Services				
530 Communications	1,922.00	3,834.00		5,756.00
Total Other Purchased Services	\$1,922.00	\$3,834.00		\$5,756.00
600 Supplies				
610 General Supplies	1,726.77	4,058.38		5,785.15
630 Food		743.47		743.47
640 Books and Periodicals	184.10	62.40		246.50
650 Supplies & Fees – Technology Related	6,183.00	9,600.40		15,783.40
Total Supplies	\$8,093.87	\$14,464.65		\$22,558.52
800 Other Objects				
810 Dues and Fees	52.50	190.00		242.50
Total Other Objects	\$52.50	\$190.00		\$242.50
Total 2380 Office of the Principal Services	\$584,169.23	\$846,255.05		\$1,430,424.28

LEA : 121394503 Northern Lehigh SD

Printed 11/30/2022 8:37:25 PM

General Fund (10)

2390 Other Administration Services

Elementary

Secondary

Federal

Total

600 Supplies

610 General Supplies

2,639.28

Total Supplies

\$2,639.28

800 Other Objects

810 Dues and Fees

2,100.00

Total Other Objects

\$2,100.00

Total 2390 Other Administration Services

\$4,739.28

General Fund (10)

	<u>Elementary</u>	<u>Secondary</u>	<u>Federal</u>	<u>Total</u>
2400 Support Services – Pupil Health				
100 Personnel Services – Salaries				
100 Personnel Services – Salaries			5,724.04	268,880.41
Total Personnel Services – Salaries			\$5,724.04	\$268,880.41
200 Personnel Services – Employee Benefits				
210 Group Insurance – Contracted Provider				25,109.83
220 Social Security Contributions			435.07	20,559.12
230 PSERS Retirement Contributions			1,999.99	91,875.61
260 Workers' Compensation			36.09	1,715.74
Total Personnel Services – Employee Benefits			\$2,471.15	\$139,260.30
300 Purchased Professional and Technical Services				
330 Other Professional Services			53,819.00	54,305.00
Total Purchased Professional and Technical Services			\$53,819.00	\$54,305.00
400 Purchased Property Services				
430 Repairs and Maintenance Services				200.00
Total Purchased Property Services				\$200.00
500 Other Purchased Services				
530 Communications				62.00
Total Other Purchased Services				\$62.00
600 Supplies				
610 General Supplies				1,265.87
650 Supplies & Fees – Technology Related				1,500.00
Total Supplies				\$2,765.87
Total 2400 Support Services – Pupil Health			\$62,014.19	\$465,473.58

General Fund (10)

2420 Medical Services

	<u>Elementary</u>	<u>Secondary</u>	<u>Federal</u>	<u>Total</u>
100 Personnel Services – Salaries				
100 Personnel Services – Salaries			5,724.04	268,880.41
Total Personnel Services – Salaries			\$5,724.04	\$268,880.41
200 Personnel Services – Employee Benefits				
210 Group Insurance – Contracted Provider				25,109.83
220 Social Security Contributions			435.07	20,559.12
230 PSERS Retirement Contributions			1,999.99	91,875.61
260 Workers' Compensation			36.09	1,715.74
Total Personnel Services – Employee Benefits			\$2,471.15	\$139,260.30
300 Purchased Professional and Technical Services				
330 Other Professional Services			53,819.00	54,305.00
Total Purchased Professional and Technical Services			\$53,819.00	\$54,305.00
400 Purchased Property Services				
430 Repairs and Maintenance Services				200.00
Total Purchased Property Services				\$200.00
500 Other Purchased Services				
530 Communications				62.00
Total Other Purchased Services				\$62.00
600 Supplies				
610 General Supplies				1,265.87
650 Supplies & Fees – Technology Related				1,500.00
Total Supplies				\$2,765.87
Total 2420 Medical Services			\$62,014.19	\$465,473.58

General Fund (10)

	<u>Elementary</u>	<u>Secondary</u>	<u>Federal</u>	<u>Total</u>
2500 Support Services – Business				
100 Personnel Services – Salaries				
100 Personnel Services – Salaries				298,709.72
Total Personnel Services – Salaries				\$298,709.72
200 Personnel Services – Employee Benefits				
210 Group Insurance – Contracted Provider				98,042.96
220 Social Security Contributions				22,794.13
230 PSERS Retirement Contributions				100,428.45
260 Workers' Compensation				1,840.21
Total Personnel Services – Employee Benefits				\$223,105.75
300 Purchased Professional and Technical Services				
330 Other Professional Services				9,648.25
Total Purchased Professional and Technical Services				\$9,648.25
400 Purchased Property Services				
430 Repairs and Maintenance Services				1,412.43
Total Purchased Property Services				\$1,412.43
500 Other Purchased Services				
530 Communications				993.00
580 Travel				440.55
Total Other Purchased Services				\$1,433.55
600 Supplies				
610 General Supplies				4,874.90
650 Supplies & Fees – Technology Related				21,373.19
Total Supplies				\$26,248.09
800 Other Objects				
810 Dues and Fees				2,599.20
Total Other Objects				\$2,599.20
Total 2500 Support Services – Business				\$563,156.99

General Fund (10)

2510 Fiscal Services

Elementary

Secondary

Federal

Total

100 Personnel Services – Salaries

100 Personnel Services – Salaries 233,923.98

Total Personnel Services – Salaries \$233,923.98

200 Personnel Services – Employee Benefits

210 Group Insurance – Contracted Provider 75,104.75

220 Social Security Contributions 17,862.14

230 PSERS Retirement Contributions 77,792.36

260 Workers' Compensation 1,432.25

Total Personnel Services – Employee Benefits \$172,191.50

300 Purchased Professional and Technical Services

330 Other Professional Services 9,648.25

Total Purchased Professional and Technical Services \$9,648.25

400 Purchased Property Services

430 Repairs and Maintenance Services 1,412.43

Total Purchased Property Services \$1,412.43

500 Other Purchased Services

530 Communications 993.00

580 Travel 440.55

Total Other Purchased Services \$1,433.55

600 Supplies

610 General Supplies 4,874.90

650 Supplies & Fees – Technology Related 16,976.19

Total Supplies \$21,851.09

800 Other Objects

810 Dues and Fees 2,599.20

Total Other Objects \$2,599.20

Total 2510 Fiscal Services \$443,060.00

General Fund (10)

	<u>Elementary</u>	<u>Secondary</u>	<u>Federal</u>	<u>Total</u>
2511 Supervision of Fiscal Services - Head of Component				
100 <u>Personnel Services – Salaries</u>				
100 Personnel Services – Salaries				127,498.55
Total Personnel Services – Salaries				\$127,498.55
200 <u>Personnel Services – Employee Benefits</u>				
210 Group Insurance – Contracted Provider				26,446.30
220 Social Security Contributions				9,808.31
230 PSERS Retirement Contributions				42,248.74
260 Workers' Compensation				761.77
Total Personnel Services – Employee Benefits				\$79,265.12
300 <u>Purchased Professional and Technical Services</u>				
330 Other Professional Services				9,648.25
Total Purchased Professional and Technical Services				\$9,648.25
400 <u>Purchased Property Services</u>				
430 Repairs and Maintenance Services				473.83
Total Purchased Property Services				\$473.83
500 <u>Other Purchased Services</u>				
530 Communications				337.17
580 Travel				128.04
Total Other Purchased Services				\$465.21
600 <u>Supplies</u>				
610 General Supplies				1,743.93
Total Supplies				\$1,743.93
800 <u>Other Objects</u>				
810 Dues and Fees				633.39
Total Other Objects				\$633.39
Total 2511 Supervision of Fiscal Services - Head of Component				\$219,728.28

General Fund (10)

2514 Payroll Services

	<u>Elementary</u>	<u>Secondary</u>	<u>Federal</u>	<u>Total</u>
100 Personnel Services – Salaries				
100 Personnel Services – Salaries				55,962.35
Total Personnel Services – Salaries				\$55,962.35
200 Personnel Services – Employee Benefits				
210 Group Insurance – Contracted Provider				24,760.93
220 Social Security Contributions				4,236.42
230 PSERS Retirement Contributions				18,252.87
260 Workers' Compensation				352.53
Total Personnel Services – Employee Benefits				\$47,602.75
400 Purchased Property Services				
430 Repairs and Maintenance Services				469.30
Total Purchased Property Services				\$469.30
500 Other Purchased Services				
530 Communications				337.17
580 Travel				105.98
Total Other Purchased Services				\$443.15
600 Supplies				
610 General Supplies				1,617.80
650 Supplies & Fees – Technology Related				7,807.23
Total Supplies				\$9,425.03
800 Other Objects				
810 Dues and Fees				113.34
Total Other Objects				\$113.34
Total 2514 Payroll Services				\$114,015.92

General Fund (10)

2515 Financial Accounting Services

100 Personnel Services – Salaries

	<u>Elementary</u>	<u>Secondary</u>	<u>Federal</u>	<u>Total</u>
100 Personnel Services – Salaries				50,463.08
Total Personnel Services – Salaries				\$50,463.08

Total Personnel Services – Salaries

200 Personnel Services – Employee Benefits

210 Group Insurance – Contracted Provider				23,897.52
220 Social Security Contributions				3,817.41
230 PSERS Retirement Contributions				17,290.75
260 Workers' Compensation				317.95
Total Personnel Services – Employee Benefits				\$45,323.63

Total Personnel Services – Employee Benefits

400 Purchased Property Services

430 Repairs and Maintenance Services				469.30
Total Purchased Property Services				\$469.30

Total Purchased Property Services

500 Other Purchased Services

530 Communications				318.66
580 Travel				206.53
Total Other Purchased Services				\$525.19

Total Other Purchased Services

600 Supplies

610 General Supplies				1,513.17
650 Supplies & Fees – Technology Related				9,168.96
Total Supplies				\$10,682.13

Total Supplies

800 Other Objects

810 Dues and Fees				110.45
Total Other Objects				\$110.45

Total Other Objects

Total 2515 Financial Accounting Services

\$107,573.78

General Fund (10)

2519 Other Fiscal Services

Elementary

Secondary

Federal

Total

800 Other Objects

810 Dues and Fees

1,742.02

Total Other Objects

\$1,742.02

Total 2519 Other Fiscal Services

\$1,742.02

General Fund (10)

2530 Warehousing and Distributing Services

Elementary

Secondary

Federal

Total

100 Personnel Services – Salaries

100 Personnel Services – Salaries

64,785.74

Total Personnel Services – Salaries

\$64,785.74

200 Personnel Services – Employee Benefits

210 Group Insurance – Contracted Provider

22,938.21

220 Social Security Contributions

4,931.99

230 PSERS Retirement Contributions

22,636.09

260 Workers' Compensation

407.96

Total Personnel Services – Employee Benefits

\$50,914.25

600 Supplies

650 Supplies & Fees – Technology Related

4,397.00

Total Supplies

\$4,397.00

Total 2530 Warehousing and Distributing Services

\$120,096.99

LEA : 121394503 Northern Lehigh SD

Printed 11/30/2022 8:37:25 PM

General Fund (10)

	<u>Elementary</u>	<u>Secondary</u>	<u>Federal</u>	<u>Total</u>
2600 Operation and Maintenance of Plant Services				
100 Personnel Services – Salaries				
100 Personnel Services – Salaries			19,834.50	1,218,194.12
Total Personnel Services – Salaries			\$19,834.50	\$1,218,194.12
200 Personnel Services – Employee Benefits				
210 Group Insurance – Contracted Provider				311,186.33
220 Social Security Contributions				90,354.47
230 PSERS Retirement Contributions			3,155.25	395,705.78
260 Workers' Compensation				7,277.10
299 All Other Employee Benefits				547.70
Total Personnel Services – Employee Benefits			\$3,155.25	\$805,071.38
300 Purchased Professional and Technical Services				
390 Other Purchased Professional and Technical Services				195,468.43
Total Purchased Professional and Technical Services				\$195,468.43
400 Purchased Property Services				
410 Cleaning Services				27,263.32
420 Utility Services				28,236.70
430 Repairs and Maintenance Services				12,439.71
440 Rentals				2,117.62
460 Extermination Services				3,000.00
490 Other Purchased Property Services				75.51
Total Purchased Property Services				\$73,132.86
500 Other Purchased Services				
521 Fire Insurance				49,844.30
522 Automotive Liability Insurance				11,210.55
523 General Property and Liability Insurance				38,938.00
529 Other Insurance				13,589.00
530 Communications				34,046.98
Total Other Purchased Services				\$147,628.83
600 Supplies				
610 General Supplies	76,382.42	67,538.07		143,920.49
620 Energy				364,305.65
Total Supplies	\$76,382.42	\$67,538.07		\$508,226.14
700 Property				
752 Capital Equipment – Original and Additional			55,037.60	55,037.60
762 Capitalized Equipment - Replacement				10,918.40
Total Property			\$55,037.60	\$65,956.00
800 Other Objects				
810 Dues and Fees				1,911.64
Total Other Objects				\$1,911.64
Total 2600 Operation and Maintenance of Plant Services	\$76,382.42	\$67,538.07	\$78,027.35	\$3,015,589.40

General Fund (10)

	<u>Elementary</u>	<u>Secondary</u>	<u>Federal</u>	<u>Total</u>
2610 Supervision of Operation and Maintenance of Plant Services				
100 Personnel Services – Salaries				
100 Personnel Services – Salaries				131,311.99
Total Personnel Services – Salaries				\$131,311.99
200 Personnel Services – Employee Benefits				
210 Group Insurance – Contracted Provider				7,778.27
220 Social Security Contributions				7,674.50
230 PSERS Retirement Contributions				34,010.39
260 Workers' Compensation				433.32
Total Personnel Services – Employee Benefits				\$49,896.48
400 Purchased Property Services				
430 Repairs and Maintenance Services				1,408.55
Total Purchased Property Services				\$1,408.55
500 Other Purchased Services				
530 Communications				3,917.49
Total Other Purchased Services				\$3,917.49
600 Supplies				
610 General Supplies	215.92	215.93		431.85
Total Supplies	\$215.92	\$215.93		\$431.85
800 Other Objects				
810 Dues and Fees				1,334.64
Total Other Objects				\$1,334.64
Total 2610 Supervision of Operation and Maintenance of Plant Services	\$215.92	\$215.93		\$188,301.00

General Fund (10)

	<u>Elementary</u>	<u>Secondary</u>	<u>Federal</u>	<u>Total</u>
2611 Supervision of Operation and Maintenance of Plant Services – Head of Component				
100 Personnel Services – Salaries				
100 Personnel Services – Salaries				131,311.99
Total Personnel Services – Salaries				\$131,311.99
200 Personnel Services – Employee Benefits				
210 Group Insurance – Contracted Provider				7,778.27
220 Social Security Contributions				7,674.50
230 PSERS Retirement Contributions				34,010.39
260 Workers' Compensation				433.32
Total Personnel Services – Employee Benefits				\$49,896.48
400 Purchased Property Services				
430 Repairs and Maintenance Services				1,408.55
Total Purchased Property Services				\$1,408.55
500 Other Purchased Services				
530 Communications				3,917.49
Total Other Purchased Services				\$3,917.49
600 Supplies				
610 General Supplies	215.92	215.93		431.85
Total Supplies	\$215.92	\$215.93		\$431.85
800 Other Objects				
810 Dues and Fees				1,334.64
Total Other Objects				\$1,334.64
Total 2611 Supervision of Operation and Maintenance of Plant Services – Head of Component	\$215.92	\$215.93		\$188,301.00

General Fund (10)

	<u>Elementary</u>	<u>Secondary</u>	<u>Federal</u>	<u>Total</u>
2620 Operation of Buildings Services				
100 Personnel Services – Salaries				
100 Personnel Services – Salaries				906,562.38
Total Personnel Services – Salaries				\$906,562.38
200 Personnel Services – Employee Benefits				
210 Group Insurance – Contracted Provider				276,684.59
220 Social Security Contributions				68,897.32
230 PSERS Retirement Contributions				301,716.78
260 Workers' Compensation				5,709.73
299 All Other Employee Benefits				547.70
Total Personnel Services – Employee Benefits				\$653,556.12
300 Purchased Professional and Technical Services				
390 Other Purchased Professional and Technical Services				195,468.43
Total Purchased Professional and Technical Services				\$195,468.43
400 Purchased Property Services				
410 Cleaning Services				27,263.32
420 Utility Services				28,236.70
430 Repairs and Maintenance Services				7,713.64
440 Rentals				2,117.62
460 Extermination Services				3,000.00
490 Other Purchased Property Services				75.51
Total Purchased Property Services				\$68,406.79
500 Other Purchased Services				
521 Fire Insurance				49,844.30
522 Automotive Liability Insurance				11,210.55
523 General Property and Liability Insurance				38,938.00
529 Other Insurance				13,589.00
530 Communications				30,129.49
Total Other Purchased Services				\$143,711.34
600 Supplies				
610 General Supplies	68,673.47			128,502.58
620 Energy		59,829.11		349,151.86
Total Supplies	\$68,673.47	\$59,829.11		\$477,654.44
700 Property				
752 Capital Equipment – Original and Additional			55,037.60	55,037.60
762 Capitalized Equipment - Replacement				5,128.40
Total Property			\$55,037.60	\$60,166.00
800 Other Objects				
810 Dues and Fees				577.00
Total Other Objects				\$577.00
Total 2620 Operation of Buildings Services	\$68,673.47	\$59,829.11	\$55,037.60	\$2,506,102.50

General Fund (10)

2630 Care and Upkeep of Grounds Services

Elementary

Secondary

Federal

Total

100 Personnel Services – Salaries

100 Personnel Services – Salaries

80,824.95

Total Personnel Services – Salaries

\$80,824.95

200 Personnel Services – Employee Benefits

210 Group Insurance – Contracted Provider

246.89

220 Social Security Contributions

6,187.33

230 PSERS Retirement Contributions

26,169.31

260 Workers' Compensation

509.61

Total Personnel Services – Employee Benefits

\$33,113.14

Total 2630 Care and Upkeep of Grounds Services

\$113,938.09

General Fund (10)

2640 Care and Upkeep of Equipment Services

Elementary

Secondary

Federal

Total

100 Personnel Services – Salaries

100 Personnel Services – Salaries

4,053.56

Total Personnel Services – Salaries

\$4,053.56

200 Personnel Services – Employee Benefits

210 Group Insurance – Contracted Provider

2,140.43

220 Social Security Contributions

303.95

230 PSERS Retirement Contributions

1,416.32

260 Workers' Compensation

25.56

Total Personnel Services – Employee Benefits

\$3,886.26

700 Property

762 Capitalized Equipment - Replacement

5,790.00

Total Property

\$5,790.00

Total 2640 Care and Upkeep of Equipment Services

\$13,729.82

General Fund (10)

	<u>Elementary</u>	<u>Secondary</u>	<u>Federal</u>	<u>Total</u>
2650 Vehicle Operation and Maintenance Services (Other Than Student Transportation Vehicles)				
400 Purchased Property Services				
430 Repairs and Maintenance Services				3,317.52
Total Purchased Property Services				\$3,317.52
600 Supplies				
610 General Supplies	2,109.90	2,109.90		4,219.80
620 Energy				15,153.79
Total Supplies	\$2,109.90	\$2,109.90		\$19,373.59
Total 2650 Vehicle Operation and Maintenance Services (Other Than Student Transportation Vehicles)	\$2,109.90	\$2,109.90		\$22,691.11

General Fund (10)

	<u>Elementary</u>	<u>Secondary</u>	<u>Federal</u>	<u>Total</u>
2660 Safety and Security Services				
100 Personnel Services – Salaries				
100 Personnel Services – Salaries			19,834.50	95,441.24
Total Personnel Services – Salaries			\$19,834.50	\$95,441.24
200 Personnel Services – Employee Benefits				
210 Group Insurance – Contracted Provider				24,336.15
220 Social Security Contributions				7,291.37
230 PSERS Retirement Contributions			3,155.25	32,392.98
260 Workers' Compensation				598.88
Total Personnel Services – Employee Benefits			\$3,155.25	\$64,619.38
600 Supplies				
610 General Supplies	5,383.13	5,383.13		10,766.26
Total Supplies	\$5,383.13	\$5,383.13		\$10,766.26
Total 2660 Safety and Security Services	\$5,383.13	\$5,383.13	\$22,989.75	\$170,826.88

General Fund (10)

2700 Student Transportation Services

Elementary Secondary Federal Total

100	<u>Personnel Services – Salaries</u>			
	100 Personnel Services – Salaries			68,771.45
Total Personnel Services – Salaries				\$68,771.45
200	<u>Personnel Services – Employee Benefits</u>			
	210 Group Insurance – Contracted Provider			5,591.51
	220 Social Security Contributions			5,282.18
	230 PSERS Retirement Contributions			22,993.11
	260 Workers' Compensation			433.27
Total Personnel Services – Employee Benefits				\$34,300.07
500	<u>Other Purchased Services</u>			
	513 Contracted Carriers		35,644.24	1,798,320.29
	516 Student Transportation Services From the IU			11,786.84
Total Other Purchased Services			\$35,644.24	\$1,810,107.13
600	<u>Supplies</u>			
	610 General Supplies			10,332.51
	650 Supplies & Fees – Technology Related			12,852.00
Total Supplies				\$23,184.51
Total 2700 Student Transportation Services			\$35,644.24	\$1,936,363.16

General Fund (10)

2710 Supervision of Student Transportation Services

Elementary

Secondary

Federal

Total

100 Personnel Services – Salaries

100 Personnel Services – Salaries

68,771.45

Total Personnel Services – Salaries

\$68,771.45

200 Personnel Services – Employee Benefits

210 Group Insurance – Contracted Provider

5,591.51

220 Social Security Contributions

5,282.18

230 PSERS Retirement Contributions

22,993.11

260 Workers' Compensation

433.27

Total Personnel Services – Employee Benefits

\$34,300.07

600 Supplies

610 General Supplies

432.51

Total Supplies

\$432.51

Total 2710 Supervision of Student Transportation Services

\$103,504.03

General Fund (10)

2711 Supervision of Student Transportation Services – Head of Component

Elementary

Secondary

Federal

Total

100 Personnel Services – Salaries

100 Personnel Services – Salaries

68,771.45

Total Personnel Services – Salaries

\$68,771.45

200 Personnel Services – Employee Benefits

210 Group Insurance – Contracted Provider

5,591.51

220 Social Security Contributions

5,282.18

230 PSERS Retirement Contributions

22,993.11

260 Workers' Compensation

433.27

Total Personnel Services – Employee Benefits

\$34,300.07

600 Supplies

610 General Supplies

432.51

Total Supplies

\$432.51

Total 2711 Supervision of Student Transportation Services – Head of Component

\$103,504.03

General Fund (10)

2720 Vehicle Operation Services

Elementary

Secondary

Federal

Total

500 Other Purchased Services

513 Contracted Carriers

35,644.24

1,397,004.39

516 Student Transportation Services From the IU

11,786.84

Total Other Purchased Services

\$35,644.24

\$1,408,791.23

600 Supplies

610 General Supplies

9,900.00

650 Supplies & Fees – Technology Related

12,852.00

Total Supplies

\$22,752.00

Total 2720 Vehicle Operation Services

\$35,644.24

\$1,431,543.23

General Fund (10)

2730 Monitoring Services

Elementary

Secondary

Federal

Total

500 Other Purchased Services

513 Contracted Carriers

103,791.85

Total Other Purchased Services

\$103,791.85

Total 2730 Monitoring Services

\$103,791.85

General Fund (10)

2740 Vehicle Servicing and Maintenance Services

Elementary

Secondary

Federal

Total

500 Other Purchased Services

513 Contracted Carriers

142,718.76

Total Other Purchased Services

\$142,718.76

Total 2740 Vehicle Servicing and Maintenance Services

\$142,718.76

General Fund (10)

2750 Nonpublic Transportation

Elementary

Secondary

Federal

Total

500 Other Purchased Services

513 Contracted Carriers

154,805.29

Total Other Purchased Services

\$154,805.29

Total 2750 Nonpublic Transportation

\$154,805.29

General Fund (10)

2800 Support Services – Central

Elementary Secondary Federal Total

100	<u>Personnel Services – Salaries</u>			
	100 Personnel Services – Salaries			350,437.84
Total Personnel Services – Salaries				\$350,437.84
200	<u>Personnel Services – Employee Benefits</u>			
	210 Group Insurance – Contracted Provider			76,083.84
	220 Social Security Contributions			26,764.01
	230 PSERS Retirement Contributions			118,332.60
	240 Tuition Reimbursement			54,666.00
	260 Workers' Compensation			2,194.67
Total Personnel Services – Employee Benefits				\$278,041.12
300	<u>Purchased Professional and Technical Services</u>			
	330 Other Professional Services			512.14
	360 Employee Training and Development Services			50,081.03
Total Purchased Professional and Technical Services				\$50,593.17
400	<u>Purchased Property Services</u>			
	430 Repairs and Maintenance Services			44,486.75
	440 Rentals		740.00	740.00
Total Purchased Property Services				\$740.00 \$45,226.75
500	<u>Other Purchased Services</u>			
	530 Communications			16,833.81
	580 Travel			2,372.44
Total Other Purchased Services				\$19,206.25
600	<u>Supplies</u>			
	610 General Supplies			18,482.83
	640 Books and Periodicals			5,587.40
	650 Supplies & Fees – Technology Related		16,919.50	76,712.20
Total Supplies				\$16,919.50 \$100,782.43
700	<u>Property</u>			
	762 Capitalized Equipment - Replacement		194,559.86	194,559.86
Total Property				\$194,559.86 \$194,559.86
800	<u>Other Objects</u>			
	810 Dues and Fees			346.00
Total Other Objects				\$346.00
Total 2800 Support Services – Central			\$212,219.36	\$1,039,193.42

LEA : 121394503 Northern Lehigh SD

Printed 11/30/2022 8:37:25 PM

General Fund (10)

2810 Planning, Research, Development and Evaluation Services

	<u>Elementary</u>	<u>Secondary</u>	<u>Federal</u>	<u>Total</u>
100 Personnel Services – Salaries				
100 Personnel Services – Salaries				247,536.25
Total Personnel Services – Salaries				\$247,536.25
200 Personnel Services – Employee Benefits				
210 Group Insurance – Contracted Provider				52,385.95
220 Social Security Contributions				18,912.49
230 PSERS Retirement Contributions				82,378.94
260 Workers' Compensation				1,546.35
Total Personnel Services – Employee Benefits				\$155,223.73
300 Purchased Professional and Technical Services				
330 Other Professional Services				512.14
Total Purchased Professional and Technical Services				\$512.14
400 Purchased Property Services				
430 Repairs and Maintenance Services				44,486.75
440 Rentals			740.00	740.00
Total Purchased Property Services			\$740.00	\$45,226.75
500 Other Purchased Services				
530 Communications				16,833.81
580 Travel				234.71
Total Other Purchased Services				\$17,068.52
600 Supplies				
610 General Supplies				16,928.44
650 Supplies & Fees – Technology Related			16,919.50	72,947.28
Total Supplies			\$16,919.50	\$89,875.72
700 Property				
762 Capitalized Equipment - Replacement			194,559.86	194,559.86
Total Property			\$194,559.86	\$194,559.86
Total 2810 Planning, Research, Development and Evaluation Services			\$212,219.36	\$750,002.97

LEA : 121394503 Northern Lehigh SD

Printed 11/30/2022 8:37:25 PM

General Fund (10)

2830 Staff Services

Elementary

Secondary

Federal

Total

100 Personnel Services – Salaries

100 Personnel Services – Salaries

102,901.59

Total Personnel Services – Salaries

\$102,901.59

200 Personnel Services – Employee Benefits

210 Group Insurance – Contracted Provider

23,697.89

220 Social Security Contributions

7,851.52

230 PSERS Retirement Contributions

35,953.66

240 Tuition Reimbursement

54,666.00

260 Workers' Compensation

648.32

Total Personnel Services – Employee Benefits

\$122,817.39

300 Purchased Professional and Technical Services

360 Employee Training and Development Services

50,081.03

Total Purchased Professional and Technical Services

\$50,081.03

500 Other Purchased Services

580 Travel

2,137.73

Total Other Purchased Services

\$2,137.73

600 Supplies

610 General Supplies

1,554.39

640 Books and Periodicals

5,587.40

650 Supplies & Fees – Technology Related

3,764.92

Total Supplies

\$10,906.71

800 Other Objects

810 Dues and Fees

346.00

Total Other Objects

\$346.00

Total 2830 Staff Services

\$289,190.45

General Fund (10)

2831 Supervision of Staff Services

Elementary

Secondary

Federal

Total

100 Personnel Services – Salaries

100 Personnel Services – Salaries

92,901.59

Total Personnel Services – Salaries

\$92,901.59

200 Personnel Services – Employee Benefits

210 Group Insurance – Contracted Provider

23,697.89

220 Social Security Contributions

7,086.70

230 PSERS Retirement Contributions

32,459.68

260 Workers' Compensation

585.32

Total Personnel Services – Employee Benefits

\$63,829.59

500 Other Purchased Services

580 Travel

284.33

Total Other Purchased Services

\$284.33

600 Supplies

610 General Supplies

1,554.39

650 Supplies & Fees – Technology Related

3,764.92

Total Supplies

\$5,319.31

800 Other Objects

810 Dues and Fees

21.00

Total Other Objects

\$21.00

Total 2831 Supervision of Staff Services

\$162,355.82

General Fund (10)

2832 Recruitment and Placement Services

Elementary

Secondary

Federal

Total

800 Other Objects

810 Dues and Fees

325.00

Total Other Objects

\$325.00

Total 2832 Recruitment and Placement Services

\$325.00

General Fund (10)

2833 Staff Accounting Services

Elementary

Secondary

Federal

Total

100 Personnel Services – Salaries

100 Personnel Services – Salaries

10,000.00

Total Personnel Services – Salaries

\$10,000.00

200 Personnel Services – Employee Benefits

220 Social Security Contributions

764.82

230 PSERS Retirement Contributions

3,493.98

260 Workers' Compensation

63.00

Total Personnel Services – Employee Benefits

\$4,321.80

Total 2833 Staff Accounting Services

\$14,321.80

General Fund (10)

2834 Staff Development Services – Non-Instructional, Certified Staff Only

Elementary

Secondary

Federal

Total

200 Personnel Services – Employee Benefits

240 Tuition Reimbursement

45,941.00

Total Personnel Services – Employee Benefits

\$45,941.00

300 Purchased Professional and Technical Services

360 Employee Training and Development Services

45,884.82

Total Purchased Professional and Technical Services

\$45,884.82

500 Other Purchased Services

580 Travel

279.48

Total Other Purchased Services

\$279.48

600 Supplies

640 Books and Periodicals

5,587.40

Total Supplies

\$5,587.40

Total 2834 Staff Development Services – Non-Instructional, Certified Staff Only

\$97,692.70

General Fund (10)

2836 Staff Development Services – Non-Instructional, Non-Certified Staff Only

Elementary

Secondary

Federal

Total

200 Personnel Services – Employee Benefits

240 Tuition Reimbursement

8,725.00

Total Personnel Services – Employee Benefits

\$8,725.00

300 Purchased Professional and Technical Services

360 Employee Training and Development Services

4,196.21

Total Purchased Professional and Technical Services

\$4,196.21

500 Other Purchased Services

580 Travel

1,573.92

Total Other Purchased Services

\$1,573.92

Total 2836 Staff Development Services – Non-Instructional, Non-Certified Staff Only

\$14,495.13

General Fund (10)

2900 Other Support Services

Elementary

Secondary

Federal

Total

500 Other Purchased Services

595 IU Payments By Withholding

18,014.84

Total Other Purchased Services

\$18,014.84

Total 2900 Other Support Services

\$18,014.84

General Fund (10)

2910 Support Services Not Listed Elsewhere In the 2000 Series

Elementary

Secondary

Federal

Total

500 Other Purchased Services

595 IU Payments By Withholding

18,014.84

Total Other Purchased Services

\$18,014.84

Total 2910 Support Services Not Listed Elsewhere In the 2000 Series

\$18,014.84

General Fund (10)

	<u>Total</u>
3000 Operation of Non-Instructional Services	
100 Personnel Services – Salaries	
100 Personnel Services – Salaries	374,581.88
Total Personnel Services – Salaries	\$374,581.88
200 Personnel Services – Employee Benefits	
210 Group Insurance – Contracted Provider	27,762.46
220 Social Security Contributions	28,494.46
230 PSERS Retirement Contributions	127,376.65
260 Workers’ Compensation	2,359.93
Total Personnel Services – Employee Benefits	\$185,993.50
300 Purchased Professional and Technical Services	
330 Other Professional Services	58,676.65
390 Other Purchased Professional and Technical Services	7,436.76
Total Purchased Professional and Technical Services	\$66,113.41
400 Purchased Property Services	
410 Cleaning Services	3,953.60
430 Repairs and Maintenance Services	1,701.04
490 Other Purchased Property Services	75.00
Total Purchased Property Services	\$5,729.64
500 Other Purchased Services	
510 Student Transportation Services	58,447.10
520 Insurance – General	25,250.00
530 Communications	1,561.67
550 Printing and Binding	2,205.21
580 Travel	963.88
Total Other Purchased Services	\$88,427.86
600 Supplies	
610 General Supplies	95,970.98
630 Food	22,423.10
Total Supplies	\$118,394.08
700 Property	
762 Capitalized Equipment - Replacement	5,437.65
Total Property	\$5,437.65
800 Other Objects	
810 Dues and Fees	7,120.05
890 Miscellaneous Expenditures	94,771.44
Total Other Objects	\$101,891.49
Total 3000 Operation of Non-Instructional Services	\$946,569.51

General Fund (10)

3200 Student Activities

Elementary Secondary Federal Total

100	<u>Personnel Services – Salaries</u>			
	100 Personnel Services – Salaries			373,629.38
Total Personnel Services – Salaries				\$373,629.38
200	<u>Personnel Services – Employee Benefits</u>			
	210 Group Insurance – Contracted Provider			27,762.46
	220 Social Security Contributions			28,424.05
	230 PSERS Retirement Contributions			127,043.87
	260 Workers' Compensation			2,353.92
Total Personnel Services – Employee Benefits				\$185,584.30
300	<u>Purchased Professional and Technical Services</u>			
	330 Other Professional Services		825.00	58,676.65
	390 Other Purchased Professional and Technical Services			800.00
Total Purchased Professional and Technical Services				\$825.00 \$59,476.65
400	<u>Purchased Property Services</u>			
	410 Cleaning Services			3,953.60
	430 Repairs and Maintenance Services			1,701.04
	490 Other Purchased Property Services			75.00
Total Purchased Property Services				\$5,729.64
500	<u>Other Purchased Services</u>			
	510 Student Transportation Services			58,447.10
	520 Insurance – General			25,250.00
	530 Communications			1,561.67
	550 Printing and Binding			2,205.21
	580 Travel			963.88
Total Other Purchased Services				\$88,427.86
600	<u>Supplies</u>			
	610 General Supplies		598.00	95,970.98
	630 Food			14,965.33
Total Supplies				\$598.00 \$110,936.31
700	<u>Property</u>			
	762 Capitalized Equipment - Replacement			5,437.65
Total Property				\$5,437.65
800	<u>Other Objects</u>			
	810 Dues and Fees			7,120.05
	890 Miscellaneous Expenditures			8,091.25
Total Other Objects				\$15,211.30
Total 3200 Student Activities			\$1,423.00	\$844,433.09

General Fund (10)

	<u>Elementary</u>	<u>Secondary</u>	<u>Federal</u>	<u>Total</u>
3300 Community Services				
100 Personnel Services – Salaries				
100 Personnel Services – Salaries				952.50
Total Personnel Services – Salaries				\$952.50
200 Personnel Services – Employee Benefits				
220 Social Security Contributions				70.41
230 PSERS Retirement Contributions				332.78
260 Workers’ Compensation				6.01
Total Personnel Services – Employee Benefits				\$409.20
300 Purchased Professional and Technical Services				
390 Other Purchased Professional and Technical Services				6,636.76
Total Purchased Professional and Technical Services				\$6,636.76
600 Supplies				
630 Food				7,457.77
Total Supplies				\$7,457.77
Total 3300 Community Services				\$15,456.23

LEA : 121394503 Northern Lehigh SD

Printed 11/30/2022 8:37:29 PM

General Fund (10)

3400 Scholarships and Awards

Elementary

Secondary

Federal

Total

800 Other Objects

890 Miscellaneous Expenditures

86,680.19

Total Other Objects

\$86,680.19

Total 3400 Scholarships and Awards

\$86,680.19

General Fund (10)

4000 Facilities Acquisition, Construction and Improvement Services

Total

400 Purchased Property Services

450 Construction Services

328,759.40

Total Purchased Property Services

\$328,759.40

700 Property

710 Land and Improvements

5,213.00

762 Capitalized Equipment - Replacement

87,844.90

Total Property

\$93,057.90

Total 4000 Facilities Acquisition, Construction and Improvement Services

\$421,817.30

LEA : 121394503 Northern Lehigh SD

Printed 11/30/2022 8:37:33 PM

General Fund (10)

4200 Existing Site Improvement Services

Elementary

Secondary

Federal

Total

700 Property

710 Land and Improvements

5,213.00

762 Capitalized Equipment - Replacement

87,844.90

Total Property

\$93,057.90

Total 4200 Existing Site Improvement Services

\$93,057.90

General Fund (10)

4600 Existing Building Improvement Services

Elementary

Secondary

Federal

Total

400 Purchased Property Services

450 Construction Services

328,759.40

328,759.40

Total Purchased Property Services

\$328,759.40

\$328,759.40

Total 4600 Existing Building Improvement Services

\$328,759.40

\$328,759.40

General Fund (10)

5000 Other Expenditures and Financing Uses

Total

800 Other Objects

830 Interest 668,587.63

880 Refunds of Prior Years' Receipts 37,600.86

Total Other Objects \$706,188.49

900 Other Uses of Funds

910 Redemption of Principal 362,290.82

Total Other Uses of Funds \$362,290.82

Total 5000 Other Expenditures and Financing Uses \$1,068,479.31

LEA : 121394503 Northern Lehigh SD

Printed 11/30/2022 8:37:38 PM

General Fund (10)

5100 Debt Service / Other Expenditures and Financing Uses	<u>Elementary</u>	<u>Secondary</u>	<u>Federal</u>	<u>Total</u>
800 <u>Other Objects</u>				
830 Interest				668,587.63
880 Refunds of Prior Years' Receipts				37,600.86
Total Other Objects				\$706,188.49
900 <u>Other Uses of Funds</u>				
910 Redemption of Principal				362,290.82
Total Other Uses of Funds				\$362,290.82
Total 5100 Debt Service / Other Expenditures and Financing Uses				\$1,068,479.31

General Fund (10)

	<u>Elementary</u>	<u>Secondary</u>	<u>Federal</u>	<u>Total</u>
5110 Debt Service				
800 Other Objects				
830 Interest				668,587.63
Total Other Objects				\$668,587.63
900 Other Uses of Funds				
910 Redemption of Principal				362,290.82
Total Other Uses of Funds				\$362,290.82
Total 5110 Debt Service				\$1,030,878.45

LEA : 121394503 Northern Lehigh SD

Printed 11/30/2022 8:37:38 PM

General Fund (10)

5130 Refund of Prior Year Revenues / Receipts

Elementary

Secondary

Federal

Total

800 Other Objects

880 Refunds of Prior Years' Receipts

37,600.86

Total Other Objects

\$37,600.86

Total 5130 Refund of Prior Year Revenues / Receipts

\$37,600.86

	<u>General Fund(10)</u>	<u>Student Sponsored Activity Fund(21)</u>	<u>Public Purpose Trust(27)</u>	<u>Other Compt Approved (28)</u>	<u>Athletic / Activity(29)</u>
1000 Instruction					
1100 Regular Programs - Elementary / Secondary	13,385,501.72				
1200 Special Programs - Elementary / Secondary	5,627,612.94				
1300 Vocational Education	1,227,844.01				
1400 Other Instructional Programs - Elementary / Secondary	34,644.10				
1500 Nonpublic School Programs	5,057.00				
1600 Adult Education Programs	174,533.96				
1700 Higher Education Programs for Secondary Students	4,905.00				
Total Instruction	\$20,460,098.73				
2000 Support Services					
2100 Support Services - Students	1,097,553.74				
2200 Support Services - Instructional Staff	1,124,718.31				
2300 Support Services - Administration	2,397,672.52				
2400 Support Services - Pupil Health	465,473.58				
2500 Support Services - Business	563,156.99				
2600 Operation and Maintenance of Plant Services	3,015,589.40				
2700 Student Transportation Services	1,936,363.16				
2800 Support Services - Central	1,039,193.42				
2900 Other Support Services	18,014.84				
Total Support Services	\$11,657,735.96				
3000 Operation of Non-Instructional Services					
3200 Student Activities	844,433.09				
3300 Community Services	15,456.23				
3400 Scholarships and Awards	86,680.19				
Total Operation of Non-Instructional Services	\$946,569.51				
4000 Facilities Acquisition, Construction and Improvement Services					
4200 Existing Site Improvement Services	93,057.90				
4600 Existing Building Improvement Services	328,759.40				
Total Facilities Acquisition, Construction and Improvement Services	\$421,817.30				
5000 Other Expenditures and Financing Uses					
5100 Debt Service / Other Expenditures and Financing Uses	1,068,479.31				
Total Other Expenditures and Financing Uses	\$1,068,479.31				
TOTAL ACTUAL EXPENDITURES & OTHER FINANCING USES	\$34,554,700.81				

<u>Capital Reserve (690.</u>	<u>Capital Reserve (1431)(32)</u>	<u>Other Capital Projects</u>	<u>Debt Service(40)</u>	<u>Permanent(90)</u>
<u>1850)(31)</u>		<u>Fund(39)</u>		

- 1000 Instruction**
- 1100 Regular Programs - Elementary / Secondary
- 1200 Special Programs - Elementary / Secondary
- 1300 Vocational Education
- 1400 Other Instructional Programs - Elementary / Secondary
- 1500 Nonpublic School Programs
- 1600 Adult Education Programs
- 1700 Higher Education Programs for Secondary Students

Total Instruction

- 2000 Support Services**
- 2100 Support Services - Students
- 2200 Support Services - Instructional Staff
- 2300 Support Services - Administration
- 2400 Support Services - Pupil Health
- 2500 Support Services - Business
- 2600 Operation and Maintenance of Plant Services
- 2700 Student Transportation Services
- 2800 Support Services - Central
- 2900 Other Support Services

Total Support Services

- 3000 Operation of Non-Instructional Services**
- 3200 Student Activities
- 3300 Community Services
- 3400 Scholarships and Awards

Total Operation of Non-Instructional Services

- 4000 Facilities Acquisition, Construction and Improvement Services**
- 4200 Existing Site Improvement Services
- 4600 Existing Building Improvement Services

Total Facilities Acquisition, Construction and Improvement Services

- 5000 Other Expenditures and Financing Uses**
- 5100 Debt Service / Other Expenditures and Financing Uses

Total Other Expenditures and Financing Uses

TOTAL ACTUAL EXPENDITURES & OTHER FINANCING USES

Total

1000 <u>Instruction</u>	
1100 Regular Programs - Elementary / Secondary	13,385,501.72
1200 Special Programs - Elementary / Secondary	5,627,612.94
1300 Vocational Education	1,227,844.01
1400 Other Instructional Programs - Elementary / Secondary	34,644.10
1500 Nonpublic School Programs	5,057.00
1600 Adult Education Programs	174,533.96
1700 Higher Education Programs for Secondary Students	4,905.00
Total Instruction	\$20,460,098.73
2000 <u>Support Services</u>	
2100 Support Services - Students	1,097,553.74
2200 Support Services - Instructional Staff	1,124,718.31
2300 Support Services - Administration	2,397,672.52
2400 Support Services - Pupil Health	465,473.58
2500 Support Services - Business	563,156.99
2600 Operation and Maintenance of Plant Services	3,015,589.40
2700 Student Transportation Services	1,936,363.16
2800 Support Services - Central	1,039,193.42
2900 Other Support Services	18,014.84
Total Support Services	\$11,657,735.96
3000 <u>Operation of Non-Instructional Services</u>	
3200 Student Activities	844,433.09
3300 Community Services	15,456.23
3400 Scholarships and Awards	86,680.19
Total Operation of Non-Instructional Services	\$946,569.51
4000 <u>Facilities Acquisition, Construction and Improvement Services</u>	
4200 Existing Site Improvement Services	93,057.90
4600 Existing Building Improvement Services	328,759.40
Total Facilities Acquisition, Construction and Improvement Services	\$421,817.30
5000 <u>Other Expenditures and Financing Uses</u>	
5100 Debt Service / Other Expenditures and Financing Uses	1,068,479.31
Total Other Expenditures and Financing Uses	\$1,068,479.31
TOTAL ACTUAL EXPENDITURES & OTHER FINANCING USES	\$34,554,700.81

PSERS Salary Data (Salary Data should relate to the General Fund only)

Amount Description	Amount
Total Salary Base for salaries subject to PSERS withholding	14,221,405.68
Total Federally Funded salaries subject to PSERS withholding	939,671.76
	<hr/>

Title I Expenditure Data

Amount Description	Amount
Expenditures Funded with Current Title I Funds	463,376.00
Expenditures Funded with Carry over Title I Funds	
Total Title I Expenditure Data	<hr/> \$463,376.00 <hr/>

Title IV Revenue Data

Amount Description	Amount
Revenue from Title IV-A-1: Student Support and Academic Enrichment Grants	41,990.53
Revenue from Title IV-B: 21st Century Community Learning Centers	
	<hr/>

Title V Revenue Data

Amount Description	Amount
Revenue from Title V-B-2: Rural and Low-Income School Programs	
Revenue from Title V-B-1: Small Rural School Achievement (Directly from the Federal Govt)	
	<hr/>

1. <u>Current Special Education Expenditures within Function 1000.\r\nSee list of exclusions in the note below.</u>	5,696,422.46
2. <u>Current Special Education Expenditures within Function 2000.\r\nSee list of exclusions in the note below.</u>	1,865,656.57
3. <u>Current Special Education Expenditures within Sub-Function 2100.\r\nThis data should also be included in line 2 above.\r\nSee list of exclusions in the note below.</u>	134,422.43
4. <u>Current Special Education Expenditures within Sub-Function 2200.\r\nThis data should also be included in line 2 above.\r\nSee list of exclusions in the note below.</u>	185,024.77
5. <u>Current Special Education Expenditures within Sub-Function 2700.\r\nThis data should also be included in line 2 above.\r\nSee list of exclusions in the note below.</u>	319,864.58
6. <u>Current Special Education Expenditures within Sub-Function 3100.\r\nSee list of exclusions in the note below.</u>	154,458.98
7. <u>Current Special Education Expenditures within Sub-Function 3200.\r\nSee list of exclusions in the note below.</u>	151,348.39

Note: The Current Special Education Expenditure amounts for each line should be calculated as follows:

- * Include the total expenditures for special education costs from all funds for the function/sub-function requested
- * Exclude data from sub-functions: 1243,1450,1500,1600,1807,2280,2450,2750,2990
- * Exclude data from objects: 322,511,512,516,561,562,564,566,592,593,594,595,596,597,700,830,899

Benefits for Staff Relative to Collective Bargaining Agreements

	OBJECT	COVERED	NOT COVERED	TOTAL
10 General Fund	No Self Insurance data to report			
	211 Medical Insurance	2,063,679.94	522,709.71	2,586,389.65
	212 Dental Insurance	81,304.13	19,495.83	100,799.96
	215 Eye Care Insurance			
	216 Prescription Insurance			
	271 Self-Insurance Medical Benefits			
	272 Self-Insurance Dental Benefits			
	275 Self-Insurance Eye Care Benefits			
	276 Self-Insurance Prescription Benefits			
	FUND TOTAL	\$2,144,984.07	\$542,205.54	\$2,687,189.61
50 Enterprise Fund	No Self Insurance data to report			
	211 Medical Insurance		33,182.50	33,182.50
	212 Dental Insurance		1,304.26	1,304.26
	215 Eye Care Insurance			
	216 Prescription Insurance			
	271 Self-Insurance Medical Benefits			
	272 Self-Insurance Dental Benefits			
	275 Self-Insurance Eye Care Benefits			
	276 Self-Insurance Prescription Benefits			
	FUND TOTAL		\$34,486.76	\$34,486.76
60 Internal Service Fund	No Self Insurance data to report			
	211 Medical Insurance			
	212 Dental Insurance			
	215 Eye Care Insurance			
	216 Prescription Insurance			
	271 Self-Insurance Medical Benefits			
	272 Self-Insurance Dental Benefits			
	275 Self-Insurance Eye Care Benefits			
	276 Self-Insurance Prescription Benefits			
	FUND TOTAL			
Total of All Funds		\$2,144,984.07	\$576,692.30	\$2,721,676.37

LEA : 121394503 Northern Lehigh SD

Printed 11/30/2022 8:38:03 PM

Function	Special Education (Prior Year)	Nonspecial Education (Prior Year)	Total (Prior Year)	Special Education (Current Year)	Nonspecial Education (Current Year)	Total (Current Year)
2120 Guidance Services	117,623.00	611,595.00	729,218.00	125,875.00	631,497.00	757,372.00
2140 Psychological Services	46,677.00	242,704.63	289,381.63	47,991.00	240,763.52	288,754.52
2150 Speech Pathology and Audiology Services						
2160 Social Work Services						
2260 Instruction and Curriculum Development Services	60,969.00	317,015.62	377,984.62	64,069.00	321,422.00	385,491.00
2350 Legal and Accounting Services	10,294.00	53,522.68	63,816.68	15,002.00	75,261.90	90,263.90
2420 Medical Services	64,702.00	336,426.80	401,128.80	77,361.58	388,112.00	465,473.58
2440 Nursing Services						
2700 Student Transportation Services	247,271.00	1,285,723.87	1,532,994.87	321,824.00	1,614,539.00	1,936,363.00
Total	\$547,536.00	\$2,846,988.60	\$3,394,524.60	\$652,122.58	\$3,271,595.42	\$3,923,718.00

(PRINCIPAL AMOUNTS ONLY)

GOVERNMENTAL FUNDS/ ACTIVITIES

	Short-Term Borrowing	General Obligation Bonds/Notes	Authority Building Obligations	OLTD, Ext Term Fin, Leases	Other Post-Employment Benefits (OPEB)	Compensated Absences	Net Pension Liability	Total
1. Debt at Beginning of Fiscal Year		20,765,000.00		139,684.00	3,694,737.00	1,899,919.00	45,297,279.00	71,796,619.00
2. Additional Debt Incurred During Year				142,316.00	446,960.00	36,780.00		626,056.00
3. Retirements and Repayments		220,000.00		142,291.00		1,185,503.00	7,520,186.00	9,067,980.00
4. Debt at End of Fiscal Year		20,545,000.00		139,709.00	4,141,697.00	751,196.00	37,777,093.00	63,354,695.00
5. Accreted Interest at End Of Fiscal Year								
6. Total Debt and Accreted Interest		20,545,000.00		139,709.00	4,141,697.00	751,196.00	37,777,093.00	63,354,695.00
7. Current Portion P&I - Due within 1 year		3,226,545.00		92,316.00		254,171.00		3,573,032.00
8. Interest Paid during current fiscal year		660,905.00		7,683.00				668,588.00

(PRINCIPAL AMOUNTS ONLY)

PROPRIETARY FUNDS

	Short-Term Borrowing	General Obligation Bonds/Notes	Authority Building Obligations	OLTD, Ext Term Fin, Leases	Other Post-Employment Benefits (OPEB)	Compensated Absences	Net Pension Liability	Total
1. Debt at Beginning of Fiscal Year					63,535.00	9,677.00	1,347,865.00	1,421,077.00
2. Additional Debt Incurred During Year					700.00			700.00
3. Retirements and Repayments						4,739.00	172,772.00	177,511.00
4. Debt at End of Fiscal Year					64,235.00	4,938.00	1,175,093.00	1,244,266.00
5. Accreted Interest at End Of Fiscal Year								
6. Total Debt and Accreted Interest					64,235.00	4,938.00	1,175,093.00	1,244,266.00
7. Current Portion P&I - Due within 1 year								
8. Interest Paid during current fiscal year								

Total Principal and Interest Payments Made by Your School - All Funds

Function	Fund		Principal (910)	Principal (920)	Interest (830)	Total (Principal +Interest)	Misc Other Uses (990)
5110	10	General Fund	362,290.82		668,587.63	1,030,878.45	
5110	20	Special Revenue Funds					
5110	30	Capital Projects Funds					
5110	40	Debt Service Fund					
5110	90	Permanent Fund					
5120	10	General Fund					
5120	20	Special Revenue Funds					
5120	30	Capital Projects Funds					
5120	40	Debt Service Fund					
5140	10	General Fund					
5140	20	Special Revenue Funds					
5140	30	Capital Projects Funds					
5140	40	Debt Service Fund					
5140	90	Permanent Fund					
Total Debt Payments - Governmental Funds			\$362,290.82		\$668,587.63	\$1,030,878.45	

Function	Fund		Principal (910)	Principal (920)	Interest (830)	Total (Principal +Interest)
5110	50	Enterprise Fund				
5110	60	Internal Service Fund				
5120	50	Enterprise Fund				
5120	60	Internal Service Fund				
5140	50	Enterprise Fund				
5140	60	Internal Service Fund				
Total Debt Payments - Proprietary Funds						

LEA : 121394503 Northern Lehigh SD

Printed 11/30/2022 8:38:05 PM

Debt Details
Governmental Funds/ Activities

Debt Category	Debt Issue Date (MM/YYYY)	Principal Amounts Only			Debt at End of Fiscal Year	Current Portion Due Within One Year (Principal and Interest)	Interest Paid During Fiscal Year
		Debt at Beginning of Fiscal Year	Additions	Reductions / Repayments			
General Obligation Bonds/Notes – CIB	08/2020	4,690,000.00		5,000.00	4,685,000.00	98,575.00	93,625.00
General Obligation Bonds/Notes – CIB	06/2018	11,310,000.00			11,310,000.00	452,400.00	452,400.00
General Obligation Bonds/Notes – CIB	06/2018	2,070,000.00		5,000.00	2,065,000.00	328,100.00	58,210.00
General Obligation Bonds/Notes – CIB	12/2012	2,695,000.00		210,000.00	2,485,000.00	2,347,470.00	56,670.00
Other Long Term Debt/Liabilities		139,684.00	142,316.00	142,291.00	139,709.00	92,316.00	7,683.00
Compensated Absences		1,899,919.00	36,780.00	1,185,503.00	751,196.00	254,171.00	
Other Post-Employment Benefits (OPEB)		3,694,737.00	446,960.00		4,141,697.00		
Net Pension Liability		45,297,279.00		7,520,186.00	37,777,093.00		
Totals for Debt Entered:		\$71,796,619.00	\$626,056.00	\$9,067,980.00	\$63,354,695.00	\$3,573,032.00	\$668,588.00

Bond Details
Proprietary Funds

Debt Category	Debt Issue Date (MM/YYYY)	Principal Amounts Only			Debt at End of Fiscal Year	Current Portion Due Within One Year (Principal and Interest)	Interest Paid During Fiscal Year
		Debt at Beginning of Fiscal Year	Additions	Reductions / Repayments			
Compensated Absences		9,677.00		4,739.00	4,938.00		
Other Post-Employment Benefits (OPEB)		63,535.00	700.00		64,235.00		
Net Pension Liability		1,347,865.00		172,772.00	1,175,093.00		
Totals for Debt Entered:		\$1,421,077.00	\$700.00	\$177,511.00	\$1,244,266.00		

General Fund (10)

Section 1: Tuition/Purchased Services as Reported within Expenditure Detail

	Amount
Tuition Reported in General Fund Expenditures 1000-560	3,619,453.64
Purchased Services in General Fund Expenditures 1000-594 and 1000-597	

Section 1 Total	\$3,619,453.64
------------------------	-----------------------

Section 2: Tuition Paid to Institution Types During Fiscal Year

	Tuition Paid For Nonspecial Education	Tuition Paid For Special Education	Total
1 1306 Institutions			
2 Institutionalized Children's Programs			
3 Juveniles Incarcerated in Adult Facilities	20,568.25		20,568.25
4 Residential Treatment Facilities			
5 Other Local Education Agencies		78,446.62	78,446.62
6 Brick and Mortar Charter Schools	389,726.32	16,971.45	406,697.77
7 Cyber Charter Schools	649,861.91	691,186.13	1,341,048.04
8 Career and Technology Centers	1,227,844.01		1,227,844.01
9 Approved Private Schools		406.13	406.13
10 PA Chartered Schools for the Deaf and Blind			
11 Private Residential Rehabilitative Institutions		12,216.86	12,216.86
12 Juvenile Detention Centers			
13 Special Program Jointures			
14 Other Tuition Not Included Elsewhere In This Section	226,931.48	305,294.48	532,225.96

Section 2 Total	\$2,514,931.97	\$1,104,521.67	\$3,619,453.64
------------------------	-----------------------	-----------------------	-----------------------

LEA : 121394503 Northern Lehigh SD

Printed 11/30/2022 8:38:14 PM

Food Service / Cafeteria Operations Fund (51)

3000 Operation of Non-Instructional Services

Total

100 Personnel Services – Salaries

100 Personnel Services – Salaries 415,467.00

Total Personnel Services – Salaries \$415,467.00

200 Personnel Services – Employee Benefits

210 Group Insurance – Contracted Provider 42,534.00

220 Social Security Contributions 31,818.00

230 PSERS Retirement Contributions 75,159.00

250 Unemployment Compensation 2,098.00

260 Workers' Compensation 2,745.00

299 All Other Employee Benefits 2,160.00

Total Personnel Services – Employee Benefits \$156,514.00

400 Purchased Property Services

430 Repairs and Maintenance Services 3,867.00

490 Other Purchased Property Services 3,170.00

Total Purchased Property Services \$7,037.00

500 Other Purchased Services

530 Communications 1,035.00

580 Travel 1,211.00

Total Other Purchased Services \$2,246.00

600 Supplies

610 General Supplies 22,507.00

630 Food 324,614.00

Total Supplies \$347,121.00

700 Property

740 Depreciation 5,410.00

Total Property \$5,410.00

800 Other Objects

810 Dues and Fees 272.00

880 Refunds of Prior Years' Receipts 1,159.00

890 Miscellaneous Expenditures 701.00

Total Other Objects \$2,132.00

Total 3000 Operation of Non-Instructional Services \$935,927.00

Food Service / Cafeteria Operations Fund (51)

3100 Food Services

Elementary Secondary Federal Total

100	<u>Personnel Services – Salaries</u>			
	100 Personnel Services – Salaries			19,567.00
				415,467.00
	Total Personnel Services – Salaries			\$19,567.00
				\$415,467.00
200	<u>Personnel Services – Employee Benefits</u>			
	210 Group Insurance – Contracted Provider			42,534.00
	220 Social Security Contributions		1,497.00	31,818.00
	230 PSERS Retirement Contributions		6,837.00	75,159.00
	250 Unemployment Compensation			2,098.00
	260 Workers' Compensation		123.00	2,745.00
	299 All Other Employee Benefits			2,160.00
	Total Personnel Services – Employee Benefits			\$8,457.00
				\$156,514.00
400	<u>Purchased Property Services</u>			
	430 Repairs and Maintenance Services			3,867.00
	490 Other Purchased Property Services			3,170.00
	Total Purchased Property Services			\$7,037.00
500	<u>Other Purchased Services</u>			
	530 Communications			1,035.00
	580 Travel			1,211.00
	Total Other Purchased Services			\$2,246.00
600	<u>Supplies</u>			
	610 General Supplies		509.00	22,507.00
	630 Food			324,614.00
	Total Supplies			\$509.00
				\$347,121.00
700	<u>Property</u>			
	740 Depreciation			5,410.00
	Total Property			\$5,410.00
800	<u>Other Objects</u>			
	810 Dues and Fees			272.00
	880 Refunds of Prior Years' Receipts			1,159.00
	890 Miscellaneous Expenditures			701.00
	Total Other Objects			\$2,132.00
	Total 3100 Food Services			\$28,533.00
				\$935,927.00

	<u>Food Service(51)</u>	<u>Child Care Operations(52)</u>	<u>Other Enterprise(58)</u>	<u>Internal Service(60)</u>	<u>Total</u>
3000 <u>Operation of Non-Instructional Services</u>					
3100 Food Services	935,927.00				935,927.00
Total Operation of Non-Instructional Services	\$935,927.00				\$935,927.00
TOTAL ACTUAL EXPENDITURES & OTHER FINANCING USES	\$935,927.00				\$935,927.00

LEA : 121394503 Northern Lehigh SD

Printed 11/30/2022 8:38:22 PM

Fund	School	School Number	Local Personnel	Local Nonpersonnel	State Personnel	State Nonpersonnel	Federal Personnel	Federal Nonpersonnel	Total	Explanation
10	Northern Lehigh MS	6829	2,518,647.67	424,068.60	1,815,712.33	305,714.29	118,605.49	57,262.08	5,240,010.46	
	Northern Lehigh SHS	2818	3,712,559.98	662,655.85	2,676,412.83	477,713.66	422,278.68	94,666.71	8,046,287.71	
	Peters El Sch	2813	2,812,964.47	521,449.26	2,027,887.56	375,916.75	402,236.11	78,410.22	6,218,864.37	
	Slatington El Sch	6727	3,532,375.81	748,879.28	2,546,516.69	539,872.79	535,581.38	112,624.73	8,015,850.68	
Total			12,576,547.93	2,357,052.99	9,066,529.41	1,699,217.49	1,478,701.66	342,963.74	27,521,013.22	